

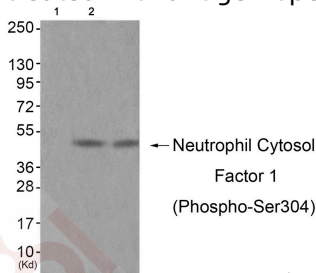
Anti-Phospho-NCF1 (Ser304) Polyclonal Antibody

Product Details

Ig Type:	IgG
Reactivity:	Human
Conjugation:	Unconjugated
Molecular Weight:	Actual: 44 kDa.
Purification:	Antibodies were produced by immunizing rabbits with synthetic phosphopeptide and KLH conjugates. Antibodies were purified by affinity-chromatography using epitope-specific phosphopeptide. Non-phospho specific antibodies were removed by chromatography using non-phosphopeptide.

Applications

Verified Activity: 1. Western blot analysis of extracts from JK cells (Lane 2) and cos-7 cells (Lane 3), using Neutrophil Cytosol Factor 1 (Phospho-Ser304) Antibody TMAC-02789. The lane on the left is treated with antigen-specific peptide.



Application:	WB
Recommended	WB: 1:500-1000

Properties

Stability & Storage:	Store at -20°C or -80°C for 12 months. Avoid repeated freeze-thaw cycles.
Shipping:	Shipping with blue ice.

Antigen Details

Immunogen:	Peptide sequence around phosphorylation site of Serine 304(R-S-S(p)-I-R) derived from Human Neutrophil Cytosol Factor 1
Antigen Species:	human
Uniprot ID:	P14598
Synonyms:	p-NCF1 (Ser304);p-NCF1 (S304);NCF1 (p-S304);NCF1 (p-Ser304)

Research Background

NCF2, NCF1, and a membrane bound cytochrome b558 are required for activation of the latent NADPH oxidase (necessary for superoxide production).

Inhibitor · Natural Compounds · Compound Libraries · Recombinant Proteins

This product is for Research Use Only · Not for Human or Veterinary or Therapeutic Use

Tel:781-999-4286 E_mail:info@targetmol.com Address:34 Washington Street,Wellesley Hills,MA 02481