

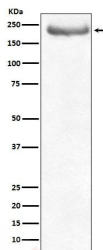
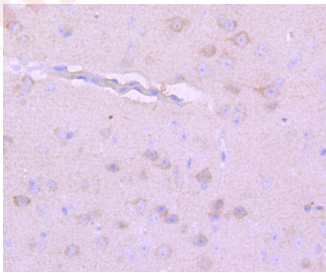
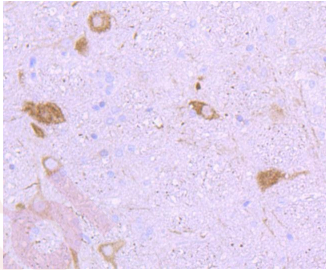
Anti-NEFH Antibody (9045)

Product Details

Ig Type:	IgG
Reactivity:	Human,Mouse,Rat
Conjugation:	Unconjugated
Molecular Weight:	Theoretical: 200 kDa.
Clone:	9045
Purification:	Affinity-chromatography

Applications

- Verified Activity:
1. Immunohistochemical analysis of paraffin-embedded rat cerebellum tissue using anti-NEFH antibody. Counter stained with hematoxylin.
 2. Immunohistochemical analysis of paraffin-embedded mouse brain tissue using anti-NEFH antibody. Counter stained with hematoxylin.
 3. Western blot analysis of NEFH expression in human brain lysate.



Application: IHC,WB
Recommended WB: 1:500-2000; IHC: 1:100-500

A DRUG SCREENING EXPERT

Properties

Stability & Storage: Store at 2°C-8°C for 1 month. Store at -20°C or -80°C for 12 months. Avoid repeated freeze-thaw cycles.

Shipping: Shipping with blue ice.

Antigen Details

Immunogen: A synthesized peptide: human NEFH

Antigen Species: human

Uniprot ID: P12036

Synonyms: 200 kDa neurofilament protein;Neurofilament heavy polypeptide;NEFH;Neurofilament triplet H protein;NF-H;KIAA0845;NFH

Research Background

Neurofilaments usually contain three intermediate filament proteins: L, M, and H which are involved in the maintenance of neuronal caliber. NF-H has an important function in mature axons that is not subserved by the two smaller NF proteins.

Inhibitor · Natural Compounds · Compound Libraries · Recombinant Proteins

This product is for Research Use Only · Not for Human or Veterinary or Therapeutic Use

Tel:781-999-4286 E_mail:info@targetmol.com Address:34 Washington Street,Wellesley Hills,MA 02481