

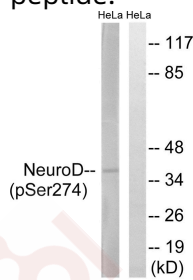
Anti-Phospho-NeuroD1 (Ser274) Polyclonal Antibody

Product Details

Ig Type:	IgG
Reactivity:	Human,Mouse,Rat
Conjugation:	Unconjugated
Molecular Weight:	Actual: 36 kDa.
Purification:	Antibodies were produced by immunizing rabbits with synthetic phosphopeptide and KLH conjugates. Antibodies were purified by affinity-chromatography using epitope-specific phosphopeptide. Non-phospho specific antibodies were removed by chromatography using non-phosphopeptide.

Applications

Verified Activity: 1. Western blot analysis of extracts from HeLa cells treated with UV using Neuro D (Phospho-Ser274) Antibody TMAC-02783. The lane on the right is treated with the antigen-specific peptide.



Application:	WB
Recommended	WB: 1:500-1000

Properties

Stability & Storage:	Store at -20°C or -80°C for 12 months. Avoid repeated freeze-thaw cycles.
Shipping:	Shipping with blue ice.

Antigen Details

Immunogen:	Peptide sequence around phosphorylation site of Serine 274(P-L-S(p)-P-P) derived from Human Neuro D
Antigen Species:	human
Uniprot ID:	Q13562
Synonyms:	p-NeuroD1 (Ser274);NeuroD1 (p-S274);NeuroD1 (p-Ser274);p-NeuroD1 (S274)

Research Background

NeuroD Acts as a differentiation factor during neurogenesis. Transcriptional activator. Binds to the insulin gene E-box.

Inhibitor · Natural Compounds · Compound Libraries · Recombinant Proteins

This product is for Research Use Only · Not for Human or Veterinary or Therapeutic Use

Tel:781-999-4286 E_mail:info@targetmol.com Address:34 Washington Street,Wellesley Hills,MA 02481