

Anti-Phospho-HER2/ERBB2 (Tyr1248) Polyclonal Antibody

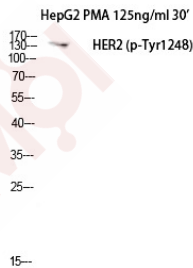
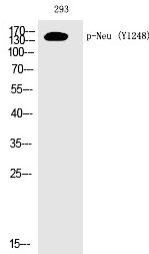
Product Details

Ig Type:	IgG
Reactivity:	Human,Mouse,Rat
Conjugation:	Unconjugated
Molecular Weight:	Actual: 150 kDa.
Purification:	The antibody was affinity-purified from rabbit antiserum by affinity-chromatography using epitope-specific immunogen.

Applications

Verified Activity:

1. Western Blot analysis of 293 cells using Phospho-Neu (Y1248) Polyclonal Antibody.
2. Western Blot analysis of HepG2+PMA cells using Phospho-Neu (Y1248) Polyclonal Antibody.



Application:	ELISA,IHC,WB
Recommended	WB: 1:500-2000; IHC: 1:100-300; ELISA: 1:20000

Properties

Stability & Storage:	Store at -20°C or -80°C for 12 months. Avoid repeated freeze-thaw cycles.
Shipping:	Shipping with blue ice.

Antigen Details

Immunogen: A synthesized phosphopeptide: human Neu around the phosphorylation site of Y1248
Antigen Species: human
Uniprot ID: P04626
Synonyms: HER2/ERBB2 (p-Y1248);p-HER2/ERBB2 (Y1248);p-HER2/ERBB2 (Tyr1248);HER2/ERBB2 (p-Tyr1248)

Inhibitor · Natural Compounds · Compound Libraries · Recombinant Proteins

This product is for Research Use Only · Not for Human or Veterinary or Therapeutic Use

Tel:781-999-4286 E_mail:info@targetmol.com Address:34 Washington Street,Wellesley Hills,MA 02481