

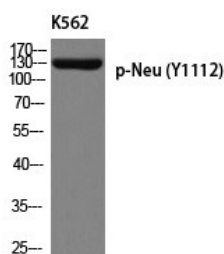
Anti-Phospho-HER2/ERBB2 (Tyr1112) Polyclonal Antibody

Product Details

Ig Type:	IgG
Reactivity:	Human,Mouse,Rat
Conjugation:	Unconjugated
Molecular Weight:	Actual: 150 kDa.
Purification:	The antibody was affinity-purified from rabbit antiserum by affinity-chromatography using epitope-specific immunogen.

Applications

Verified Activity: 1. Western blot analysis of K562 using p-Neu (Y1112) antibody.



Application: ELISA,WB
Recommended WB: 1:500-2000; ELISA: 1:10000

Properties

Stability & Storage: Store at -20°C or -80°C for 12 months. Avoid repeated freeze-thaw cycles.
Shipping: Shipping with blue ice.

Antigen Details

Immunogen: A synthesized phosphopeptide: human Neu around the phosphorylation site of Y1112
Antigen Species: Human
Uniprot ID: P04626
Synonyms: p-HER2/ERBB2 (Y1112);HER2/ERBB2 (p-Tyr1112);p-HER2/ERBB2 (Tyr1112);HER2/ERBB2 (p-Y1112)

Inhibitor · Natural Compounds · Compound Libraries · Recombinant Proteins

This product is for Research Use Only. Not for Human or Veterinary or Therapeutic Use

Tel:781-999-4286 E_mail:info@targetmol.com Address:34 Washington Street,Wellesley Hills,MA 02481