

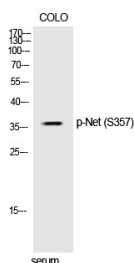
## Anti-Phospho-Net (Ser357) Polyclonal Antibody

## Product Details

Ig Type:	IgG
Reactivity:	Human,Mouse,Monkey
Conjugation:	Unconjugated
Molecular Weight:	Actual: 38 kDa.
Purification:	The antibody was affinity-purified from rabbit antiserum by affinity-chromatography using epitope-specific immunogen.

## Applications

Verified Activity: 1. Western Blot analysis of COLO cells using Phospho-Net (S357) Polyclonal Antibody.



Application: ELISA,IF,IHC,WB  
Recommended WB: 1:500-2000; IHC: 1:100-300; IF: 1:200-1000; ELISA: 1:20000

## Properties

Stability & Storage: Store at -20°C or -80°C for 12 months. Avoid repeated freeze-thaw cycles.  
Shipping: Shipping with blue ice.

## Antigen Details

Immunogen: A synthesized phosphopeptide: human Net around the phosphorylation site of S357  
Antigen Species: Human  
Uniprot ID: P41970  
Synonyms: Net (p-Ser357);p-Net (S357);Net (p-S357);p-Net (Ser357)

Inhibitor · Natural Compounds · Compound Libraries · Recombinant Proteins

This product is for Research Use Only. Not for Human or Veterinary or Therapeutic Use

Tel:781-999-4286 E\_mail:info@targetmol.com Address:34 Washington Street,Wellesley Hills,MA 02481