

Anti-Nesprin 1 Antibody (1Z207)

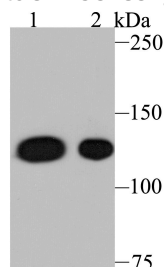
Product Details

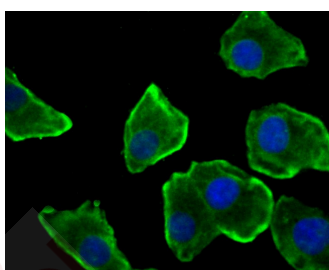
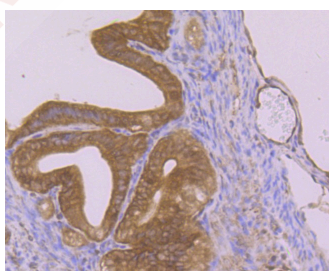
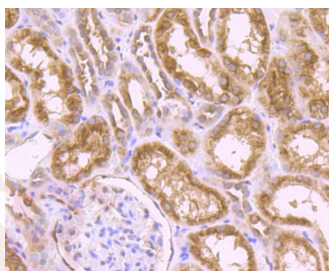
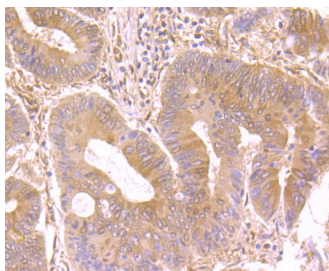
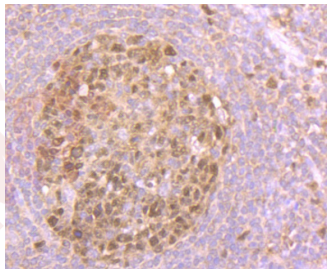
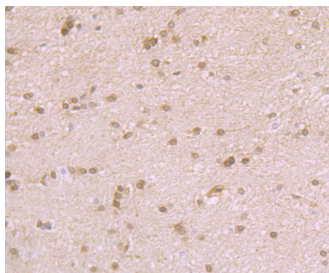
Ig Type:	IgG
Reactivity:	Human,Mouse,Rat
Conjugation:	Unconjugated
Molecular Weight:	Theoretical: 1011 kDa.
Clone:	1Z207
Purification:	ProA affinity purified

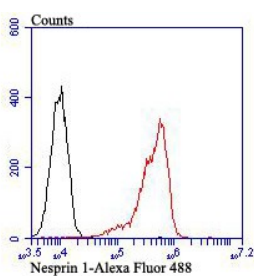
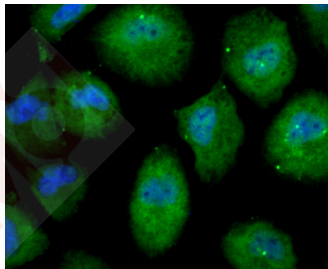
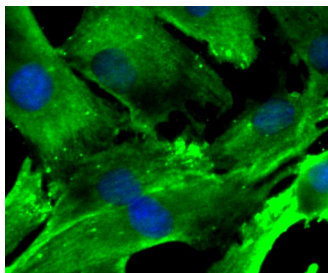
Applications

1. Western blot analysis of Nesprin 1 on different lysates using anti-Nesprin 1 antibody at 1/500 dilution. Positive control: Lane 1: A549, Lane 2: Mouse spleen tissue.
2. Immunohistochemical analysis of paraffin-embedded rat brain tissue using anti-Nesprin 1 antibody. Counter stained with hematoxylin.
3. Immunohistochemical analysis of paraffin-embedded human tonsil tissue using anti-Nesprin 1 antibody. Counter stained with hematoxylin.
4. Immunohistochemical analysis of paraffin-embedded human colon cancer tissue using anti-Nesprin 1 antibody. Counter stained with hematoxylin.
5. Immunohistochemical analysis of paraffin-embedded human kidney tissue using anti-Nesprin 1 antibody. Counter stained with hematoxylin.
6. Immunohistochemical analysis of paraffin-embedded mouse fallopian tubes tissue using anti-Nesprin 1 antibody. Counter stained with hematoxylin.
7. ICC staining Nesprin 1 in A549 cells (green). The nuclear counter stain is DAPI (blue). Cells were fixed in paraformaldehyde, permeabilised with 0.25% Triton X100/PBS.
8. ICC staining Nesprin 1 in C2C12 cells (green). The nuclear counter stain is DAPI (blue). Cells were fixed in paraformaldehyde, permeabilised with 0.25% Triton X100/PBS.
9. ICC staining Nesprin 1 in HUVEC cells (green). The nuclear counter stain is DAPI (blue). Cells were fixed in paraformaldehyde, permeabilised with 0.25% Triton X100/PBS.
10. Flow cytometric analysis of Daudi cells with Nesprin 1 antibody at 1/100 dilution (red) compared with an unlabelled control (cells without incubation with primary antibody; black). Alexa Fluor 488-conjugated goat anti-rabbit IgG was used as the secondary antibody.

Verified Activity:







Application: FCM, ICC, IF, IHC, WB

Recommended WB: 1:500-2000; IHC: 1:50-200; ICC: 1:200-1000; FCM: 1:50-100

Properties

Stability & Storage: Store at -20°C or -80°C for 12 months. Avoid repeated freeze-thaw cycles.

Shipping: Shipping with blue ice.

Antigen Details

Immunogen: A synthesized phosphopeptide: within Human Nesprin1 aa 8241-8290/8797

Antigen Species: human

Uniprot ID: Q8NF91

Synonyms:

SYNE1B;MYNE1;8B;SCAR8;dJ45H2.2;EDMD4;Synaptic nuclear envelope protein 1;Myne-1;Syne-1;Enaptin;CPG2;Nesprin1;Myocyte nuclear envelope protein 1;Nesp1;C6orf98;Nuclear envelope spectrin repeat protein 1;ARCA1;SYNE1_HUMAN;CPG2 full length;Synaptic nuclei expressed gene 1;Spectrin repeat containing nuclear envelope 1;SYNE1

Research Background

Multi-isomeric modular protein which forms a linking network between organelles and the actin cytoskeleton to maintain the subcellular spatial organization. As a component of the LINC (Linker of Nucleoskeleton and Cytoskeleton) complex involved in the connection between the nuclear lamina and the cytoskeleton. The nucleocytoplasmic interactions established by the LINC complex play an important role in the transmission of mechanical forces across the nuclear envelope and in nuclear movement and positioning. May be involved in nucleus-centrosome attachment and nuclear migration in neural progenitors implicating LINC complex association with SUN1/2 and probably association with cytoplasmic dynein-dynactin motor complexes; SYNE1 and SYNE2 may act redundantly. Required for centrosome migration to the apical cell surface during early ciliogenesis. May be involved in nuclear remodeling during sperm head formation in spermatogenesis; a probable SUN3:SYNE1/KASH1

LINC complex may tether spermatid nuclei to posterior cytoskeletal structures such as the manchette.

Inhibitor · Natural Compounds · Compound Libraries · Recombinant Proteins

This product is for Research Use Only · Not for Human or Veterinary or Therapeutic Use

Tel:781-999-4286 E_mail:info@targetmol.com Address:34 Washington Street,Wellesley Hills,MA 02481