

Anti-NEDD8 Antibody (6A250)

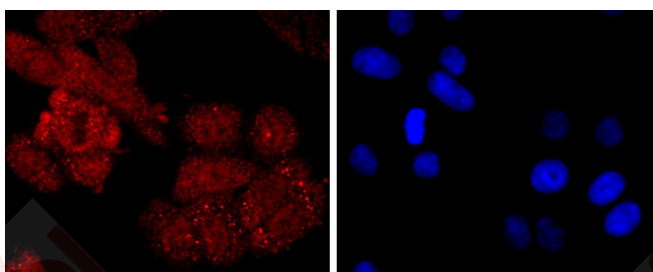
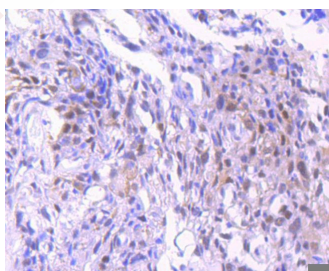
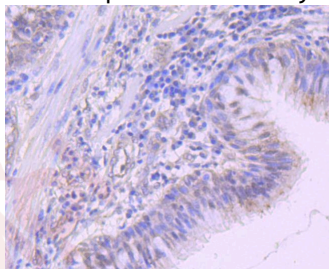
Product Details

Ig Type:	IgG
Reactivity:	Human,Mouse,Rat
Conjugation:	Unconjugated
Molecular Weight:	Theoretical: 9 kDa.
Clone:	6A250
Purification:	ProA affinity purified

Applications

Verified Activity:

1. Immunohistochemical analysis of paraffin-embedded human lung cancer tissue using anti-NEDD8 antibody. Counter stained with hematoxylin.
2. Immunohistochemical analysis of paraffin-embedded human breast carcinoma tissue using anti-NEDD8 antibody. Counter stained with hematoxylin.
3. ICC staining NEDD8 in HepG2 cells (red). The nuclear counter stain is DAPI (blue). Cells were fixed in paraformaldehyde, permeabilised with 0.25% Triton X100/PBS.



Application: ICC/IF,IHC,IP,WB

Recommended WB: 1:500-1000; IHC: 1:50-100; ICC/IF: 1:50-200; IP: 1:50

Properties

Stability & Storage: Store at -20°C or -80°C for 12 months. Avoid repeated freeze-thaw cycles.

Shipping: Shipping with blue ice.

Antigen Details

Immunogen: Recombinant Protein

Uniprot ID: Q15843

Synonyms: Neural precursor cell expressed developmentally down-regulated protein 8; Ubiquitin-like protein Nedd8; Neddylin; NEDD8

Research Background

NEDD8 is a ubiquitin (Ub)-like molecule that shares 80% homology with ubiquitin, a protein known to modify and target various proteins for proteolytic degradation. NEDD8 and the corresponding yeast homolog Rub1 are activated by the E1 ubiquitin activating enzyme UBA2, which forms isopeptide linkages between thio esters. Similar to the Ub-mediated proteolytic pathway, NEDD8 is covalently coupled to an E3 Ub ligase by the E2 conjugating enzyme, Ubc12. NEDD8 preferentially associates with the CUL-2 protein in the E3 ligase complex CBCVHL, which consists of cullin proteins associating with elongin B/C and the tumor suppressor F-box protein, von Hippel Lindau (VHL). NEDD8 is predominantly localized to the nucleus and is highly expressed in adult heart and skeletal muscle. In vitro studies indicate that NEDD8 tetramers are also able to bind to the 26S Proteasome, and that they assemble into complexes with conserved Ub-like moieties, suggesting that NEDD8 may regulate proteolysis of intracellular proteins similar to other Ub-mediated pathways.

Inhibitor · Natural Compounds · Compound Libraries · Recombinant Proteins

This product is for Research Use Only · Not for Human or Veterinary or Therapeutic Use

Tel: 781-999-4286 E_mail: info@targetmol.com Address: 34 Washington Street, Wellesley Hills, MA 02481