

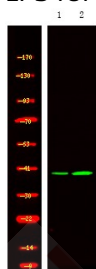
Anti-Phospho-NDEL1 (Thr219) Polyclonal Antibody

Product Details

Ig Type:	IgG
Reactivity:	Human,Mouse,Rat
Conjugation:	Unconjugated
Molecular Weight:	Theoretical: 38 kDa.
Purification:	Antibodies were produced by immunizing rabbits with synthetic phosphopeptide and KLH conjugates. Antibodies were purified by affinity-chromatography using epitope-specific phosphopeptide. Non-phospho specific antibodies were removed by chromatography using non-phosphopeptide.

Applications

Verified Activity: 1. Western Blot analysis of lysates of 1. HepG2 cell and 2. HepG2 cell treated with 100ng/mL LPS for 30min, using primary antibody at 1:1000 dilution.



Application: WB
 Recommended WB: 1:1000

Properties

Stability & Storage: Store at -20°C or -80°C for 12 months. Avoid repeated freeze-thaw cycles.
 Shipping: Shipping with blue ice.

Antigen Details

Immunogen: A synthesized phosphopeptide: human NDEL1 around the phosphorylation site of Thr219
 Antigen Species: human
 Uniprot ID: Q9GZM8
 Synonyms: p-NDEL1 (T219);NDEL1 (p-T219);NDEL1 (p-Thr219);p-NDEL1 (Thr219)

Inhibitor · Natural Compounds · Compound Libraries · Recombinant Proteins

This product is for Research Use Only · Not for Human or Veterinary or Therapeutic Use

Tel:781-999-4286 E_mail:info@targetmol.com Address:34 Washington Street,Wellesley Hills,MA 02481