

Anti-NCAM1 Antibody (1L189)

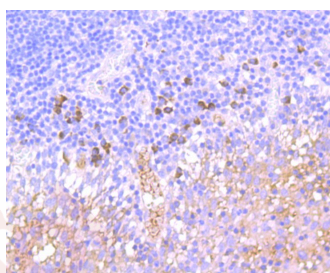
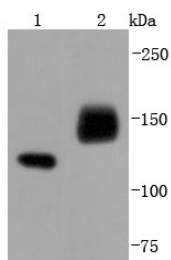
Product Details

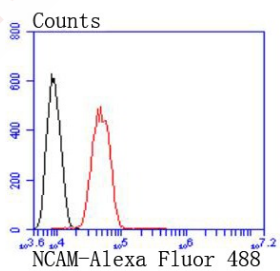
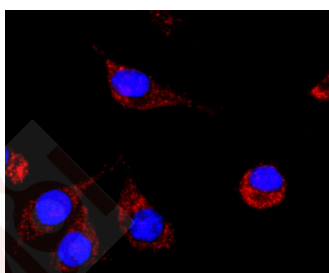
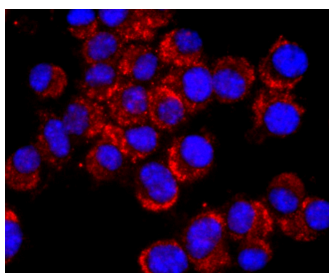
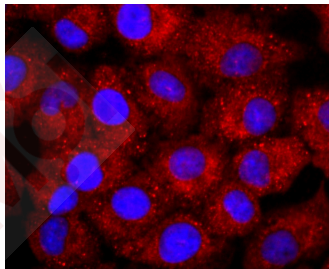
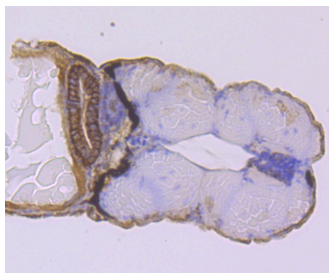
Ig Type:	IgG
Reactivity:	Human,Mouse,zebrafish
Conjugation:	Unconjugated
Molecular Weight:	Theoretical: 100-150 kDa.
Clone:	1L189
Purification:	ProA affinity purified

Applications

Verified Activity:

1. Western blot analysis of NCAM on different lysates using anti-NCAM antibody at 1/1,000 dilution. Positive control: Lane 1: SH-SY-5Y, Lane 2: Human brain.
2. Immunohistochemical analysis of paraffin-embedded human tonsil tissue using anti-NCAM antibody. Counter stained with hematoxylin.
3. Immunohistochemical analysis of paraffin-embedded zebrafish kidney tissue using anti-NCAM antibody. Counter stained with hematoxylin.
4. ICC staining NCAM in A549 cells (red). The nuclear counter stain is DAPI (blue). Cells were fixed in paraformaldehyde, permeabilised with 0.25% Triton X100/PBS.
5. ICC staining NCAM in N2A cells (red). The nuclear counter stain is DAPI (blue). Cells were fixed in paraformaldehyde, permeabilised with 0.25% Triton X100/PBS.
6. ICC staining NCAM in SH-SY-5Y cells (red). The nuclear counter stain is DAPI (blue). Cells were fixed in paraformaldehyde, permeabilised with 0.25% Triton X100/PBS.
7. Flow cytometric analysis of SH-SY-5Y cells with NCAM antibody at 1/50 dilution (red) compared with an unlabelled control (cells without incubation with primary antibody; black). Alexa Fluor 488-conjugated goat anti rabbit IgG was used as the secondary antibody.





Application: FCM, ICC/IF, IHC, IP, WB

Recommended WB: 1:1000-5000; IHC: 1:50-200; ICC/IF: 1:50-200; FCM: 1:50-100

Properties

Stability & Storage: Store at -20°C or -80°C for 12 months. Avoid repeated freeze-thaw cycles.

Shipping: Shipping with blue ice.

Antigen Details

Immunogen: Recombinant Protein
Uniprot ID: P13591
Synonyms: neural cell adhesion molecule 1;CD56;MSK39;NCAM

Research Background

Neural cell adhesion molecules (NCAMs) are a family of closely related cell surface glycoproteins involved in cell to cell interactions during growth and thought to play an important role in embryogenesis and development. The expression of these molecules is widespread in all three germ layers during embryogenesis, but is more restrictive in adult tissues. NCAM expression is observed in a variety of human tumors including neuroblastomas, rhabdomyosarcomas, Wilms' tumor, Ewing's sarcoma and some primitive myeloid malignancies. Multiple isoforms of NCAM have been reported in both mouse and human brain tissue. In humans, NCAMs arise from differential splicing and use of alternative polyadenylation sites of a single gene mapping to 11q23.

Inhibitor · Natural Compounds · Compound Libraries · Recombinant Proteins

This product is for Research Use Only · Not for Human or Veterinary or Therapeutic Use

Tel:781-999-4286 E_mail:info@targetmol.com Address:34 Washington Street,Wellesley Hills,MA 02481