

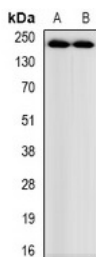
## Anti-Acetyl-Myosin-1 (Lys505) Polyclonal Antibody

### Product Details

Ig Type:	IgG
Reactivity:	Human,Mouse,Rat
Conjugation:	Unconjugated
Molecular Weight:	Theoretical: 223 kDa.
Purification:	The antibody was purified by immunogen affinity chromatography.

### Applications

Verified Activity: 1. Western blot analysis of GPRC6A expression in HEK293T, LO2, rat testis whole cell lysates.



Application:	WB
Recommended	WB: 1:500-1000

### Properties

Stability & Storage:	Store at -20°C or -80°C for 12 months. Avoid repeated freeze-thaw cycles.
Shipping:	Shipping with blue ice.

### Antigen Details

Immunogen:	KLH conjugated synthetic peptide: encompassing a sequence within the center region of human Myosin
Antigen Species:	Human
Uniprot ID:	P12882
Synonyms:	Ac-Myosin-1 (K505);Acetyl-Myosin-1 (K505);Myosin-1K505-acetylated;Ac-Myosin-1 (Lys505);Ac-Myosin-1K505;Myosin-1K505ac

**Inhibitor · Natural Compounds · Compound Libraries · Recombinant Proteins**

This product is for Research Use Only. Not for Human or Veterinary or Therapeutic Use

Tel:781-999-4286 E\_mail:info@targetmol.com Address:34 Washington Street,Wellesley Hills,MA 02481