

Anti-Myosin-6/MYH6 Antibody (9Q830)

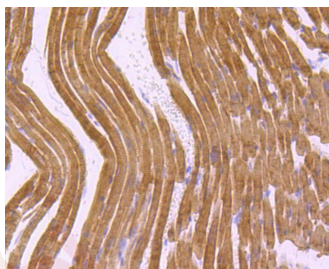
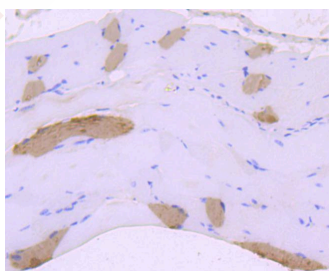
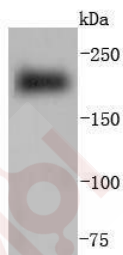
Product Details

Ig Type:	IgG
Reactivity:	Human,Mouse,Rat
Conjugation:	Unconjugated
Molecular Weight:	Theoretical: 224 kDa.
Clone:	9Q830
Purification:	ProA affinity purified

Applications

Verified Activity:

1. Western blot analysis of Myosin heavy chain on human skeletal muscle lysates using anti-Myosin heavy chain antibody at 1/1,000 dilution.
2. Immunohistochemical analysis of paraffin-embedded mouse smooth muscle tissue using anti-Myosin heavy chain antibody. Counter stained with hematoxylin.
3. Immunohistochemical analysis of paraffin-embedded mouse heart tissue using anti-Myosin heavy chain antibody. Counter stained with hematoxylin.



Application:	IHC,WB
Recommended	WB: 1:1000-2000; IHC: 1:50-200

Properties

Stability & Storage: Store at -20°C or -80°C for 12 months. Avoid repeated freeze-thaw cycles.

Shipping: Shipping with blue ice.

Antigen Details

Immunogen: Recombinant Protein

Uniprot ID: P13533

Synonyms: MYHCA;Myosin-6;MYH6;Myosin heavy chain, cardiac muscle alpha isoform (MyHC-alpha);
Myosin heavy chain 6

Research Background

Myosin is a highly conserved, ubiquitously expressed protein that interacts with Actin to generate the force for cellular movements. Conventional myosins are hexameric proteins consisting of two heavy chain subunits, a pair of non-phosphorylatable light chain subunits and a pair of phosphorylatable light chain subunits. Three general classes of myosin have been cloned: smooth muscle myosins, striated muscle myosins and non-muscle myosins. Contractile activity in smooth muscle is regulated by the calcium/calmodulin-dependent phosphorylation of myosin light chain by myosin light chain kinase. Myosin heavy chains are encoded by the MYH gene family and have Actin-activated ATPase activity which generates the motor function of myosin. Myosin heavy chains, which were initially isolated from a human fetal skeletal muscle, are the major determinant in the speed of contraction of skeletal muscle. Various isoforms of myosin heavy chain are differentially expressed depending on the functional activity of the muscle.

Inhibitor · Natural Compounds · Compound Libraries · Recombinant Proteins

This product is for Research Use Only · Not for Human or Veterinary or Therapeutic Use

Tel:781-999-4286 E_mail:info@targetmol.com Address:34 Washington Street,Wellesley Hills,MA 02481