

## Anti-Myosin Heavy Chain Antibody (1G266)

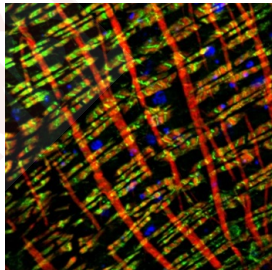
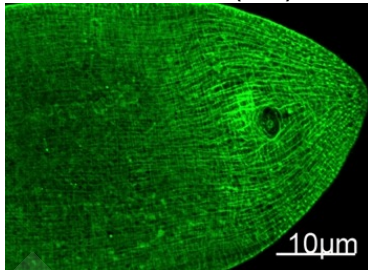
### Product Details

Reactivity:	Human,Mouse,Rat,FruitFly,Nematode
Conjugation:	Unconjugated
Molecular Weight:	Actual: 220 kDa.
Clone:	1G266
Purification:	The antibody was affinity-purified from mouse ascites by affinity-chromatography using specific immunogen.

### Applications

#### Verified Activity:

1. Immunofluorescence staining of nematode tissue with MYH mouse mAb diluted at 1:100.
2. Immunofluorescence double staining of fruit fly tissue with MYH mouse mAb (Green) and F-actin mouse mAb (red).



Application:	IF,IHC
Recommended	IF: 1:100

### Properties

Stability & Storage:	Store at -20°C or -80°C for 12 months. Avoid repeated freeze-thaw cycles.
Shipping:	Shipping with blue ice.

**Antigen Details**

Uniprot ID: P05976/P08590/P10916/P11055/P12829/P12882/P13533/P60660/Q02045

---

**Research Background**

Skeletal muscle Myosin or myosin II is the motor protein that generates force to drive muscle contraction. It is a 520 kDa hexamer comprised of two heavy chains and four light chains. Myosin heavy chain is 220 kDa in size and consists of a long coiled-coil domain tail that mediates dimerization of the two heavy chains and a globular head region that mediates ATP-dependent sliding of actin filaments. Myosin heavy chain can be proteolytically cleaved to produce heavy meromyosin, which includes the S1 motor domain (head region) and first third of the coiled coil domain, and light meromyosin, which includes the C-terminal two thirds of the coiled coil domain.

**Inhibitor · Natural Compounds · Compound Libraries · Recombinant Proteins**

This product is for Research Use Only· Not for Human or Veterinary or Therapeutic Use

Tel:781-999-4286 E\_mail:info@targetmol.com Address:34 Washington Street,Wellesley Hills,MA 02481