

## Anti-Myoglobin Antibody (7Y20)

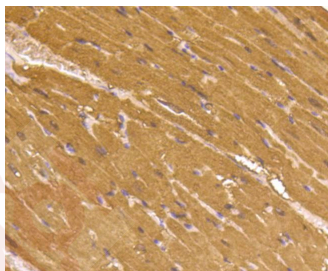
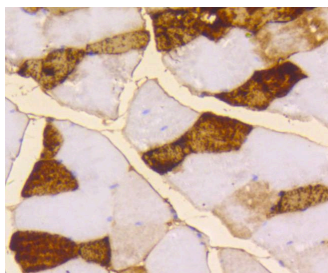
### Product Details

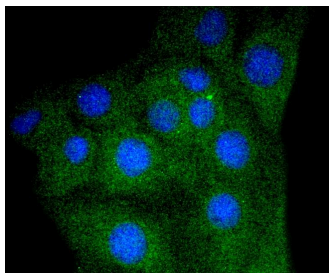
Ig Type:	IgG
Reactivity:	Human,Mouse,Rat
Conjugation:	Unconjugated
Molecular Weight:	Theoretical: 17 kDa.
Clone:	7Y20
Purification:	ProA affinity purified

### Applications

#### Verified Activity:

1. Western blot analysis of Myoglobin on human skeletal muscle lysates using anti-Myoglobin antibody at 1/1,000 dilution.
2. Immunohistochemical analysis of paraffin-embedded mouse skeletal muscle tissue using anti-Myoglobin antibody. Counter stained with hematoxylin.
3. Immunohistochemical analysis of paraffin-embedded mouse heart tissue using anti-Myoglobin antibody. Counter stained with hematoxylin.
4. ICC staining Myoglobin in C2C12 cells (green). The nuclear counter stain is DAPI (blue). Cells were fixed in paraformaldehyde, permeabilised with 0.25% Triton X100/PBS.





Application: ICC/IF,IHC,IP,WB

Recommended WB: 1:1000-5000; IHC: 1:50-200; ICC/IF: 1:50-200

---

#### Properties

Stability & Storage: Store at -20°C or -80°C for 12 months. Avoid repeated freeze-thaw cycles.

Shipping: Shipping with blue ice.

---

#### Antigen Details

Immunogen: Recombinant Protein

Uniprot ID: P02144

Synonyms: MB;Myoglobin;PVALB;MGC13548

---

#### Research Background

Myoglobin is a cytosolic oxygen binding protein responsible for the storage and diffusion of oxygen within myocytes. Expression of myoglobin is highest in skeletal and cardiac muscle. Myoglobin is necessary for the maintenance of mitochondrial respiration during heavy and sustained contractile activity, and it is thought to transport oxygen from erythrocytes to mitochondria. The genomic structure of myoglobin appears to be conserved across a broad range of species, and contains a putative polyadenylation signal and a polypyrimidine-rich region. Human myoglobin is specified by a single gene, and it has been identified in human smooth muscle.

**Inhibitor · Natural Compounds · Compound Libraries · Recombinant Proteins**

This product is for Research Use Only · Not for Human or Veterinary or Therapeutic Use

Tel:781-999-4286 E\_mail:info@targetmol.com Address:34 Washington Street,Wellesley Hills,MA 02481

---