

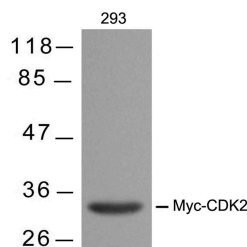
Anti-MYC Tag Antibody (3G628)

Product Details

| | |
|---------------|--|
| Ig Type: | IgG1 |
| Conjugation: | Unconjugated |
| Clone: | 3G628 |
| Purification: | Antibodies were produced from mice ascites by injecting mice with a monoclonal cell line which was fused by mouse spleen and SP2/0 myeloma cell. Spleen cells were isolated from mice by immunizing with synthetic peptide and KLH conjugates. |

Applications

Verified Activity: 1. Western blot analysis of extracts from 293 cells transfected with Myc-CDK2 using Myc-Tag mouse mAb TMAC-02712.



| | |
|--------------|------------------|
| Application: | WB |
| Recommended | WB: 1:5000-10000 |

Properties

| | |
|----------------------|---|
| Stability & Storage: | Store at 2°C-8°C for 1 month. Store at -20°C or -80°C for 12 months. Avoid repeated freeze-thaw cycles. |
| Shipping: | Shipping with blue ice. |

Antigen Details

| | |
|------------------|--|
| Immunogen: | Peptide sequence around aa 410-419 (EQKLISEEDL) derived from human c-Myc |
| Antigen Species: | human |
| Synonyms: | BHLHE39 |

Research Background

Epitope tags are artificial epitopes useful for the labeling and detection of proteins. Epitope tags - short amino acid sequences are 'fused' to the N- or C-terminus of the protein.

Inhibitor · Natural Compounds · Compound Libraries · Recombinant Proteins

This product is for Research Use Only. Not for Human or Veterinary or Therapeutic Use

Tel:781-999-4286 E_mail:info@targetmol.com Address:34 Washington Street,Wellesley Hills,MA 02481