

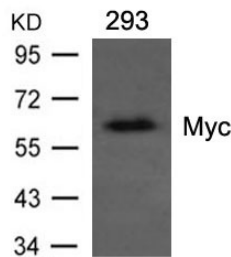
## Anti-MYC Antibody (5D921)

## Product Details

Ig Type:	IgG1
Reactivity:	Human
Conjugation:	Unconjugated
Clone:	5D921
Purification:	Antibodies were produced from mice ascites by injecting mice with a monoclonal cell line which was fused by mouse spleen and SP2/0 myeloma cell. Spleen cells were isolated from mice by immunizing with synthetic peptide and KLH conjugates.

## Applications

Verified Activity: 1. Western blot analysis of extracts from 293 cells transfected with recombinant human Myc using Myc mouse mAb TMAC-02700.



Application: WB

## Properties

Stability & Storage: Store at 2°C-8°C for 1 month. Store at -20°C or -80°C for 12 months. Avoid repeated freeze-thaw cycles.

Shipping: Shipping with blue ice.

## Antigen Details

Immunogen: Peptide sequence derived from C-terminal (aa. 410-432) of human c-Myc conjugated with KLH

Antigen Species: human

Uniprot ID: P01106

Synonyms: bHLHe39

## Research Background

Myc proto-oncogene encodes nuclear DNA-binding phosphoproteins that are involved in the regulation of gene expression and DNA replication during cell growth and differentiation. Myc encodes a protein of 65 kDa which is expressed in almost all normal and transformed cells. The expression correlates with the proliferation state of the cells. Transcription is repressed in quiescent or terminally differentiated cells. Expression of Myc is generally induced after mitogenic stimulation of cells or serum induction. Myc therefore is an important positive regulator of cell growth and proliferation. Myc has been demonstrated also to be a potent inducer of apoptosis when expressed in the absence of serum or growth factors. Apoptosis may serve also as a protective mechanism to prevent tumorigenicity elicited by deregulated Myc expression. Sequences of the Myc oncogene have been highly conserved

throughout evolution, from Drosophila to vertebrates

**Inhibitor · Natural Compounds · Compound Libraries · Recombinant Proteins**

This product is for Research Use Only · Not for Human or Veterinary or Therapeutic Use

Tel:781-999-4286 E\_mail:info@targetmol.com Address:34 Washington Street,Wellesley Hills,MA 02481