

Anti-MTCO2 Antibody (5B251)

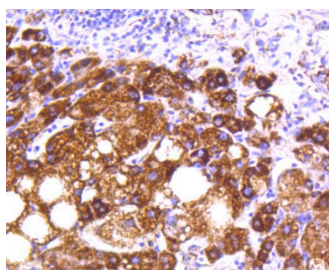
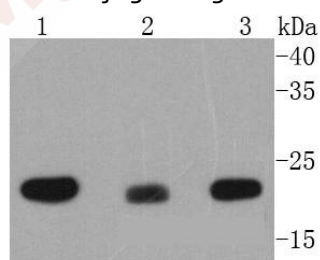
Product Details

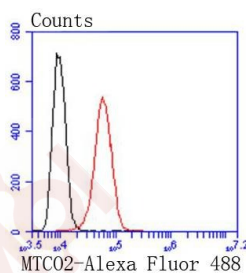
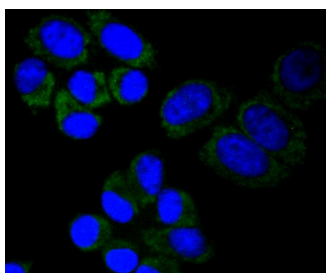
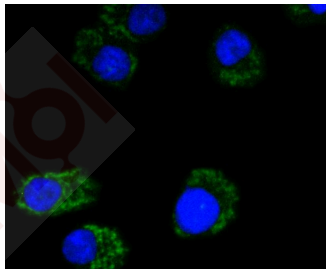
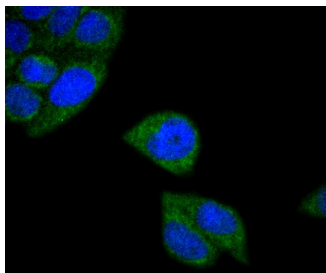
Ig Type:	IgG
Reactivity:	Human
Conjugation:	Unconjugated
Molecular Weight:	Theoretical: 25 kDa.
Clone:	5B251
Purification:	ProA affinity purified

Applications

Verified Activity:

1. Western blot analysis of MTCO2 on different lysates using anti-MTCO2 antibody at 1/1,000 dilution. Positive control: Lane 1: MCF-7, Lane 2: THP-1, Lane 3: Hela.
2. Immunohistochemical analysis of paraffin-embedded human liver tissue using anti-MTCO2 antibody. Counter stained with hematoxylin.
3. ICC staining MTCO2 in Hela cells (green). The nuclear counter stain is DAPI (blue). Cells were fixed in paraformaldehyde, permeabilised with 0.25% Triton X100/PBS.
4. ICC staining MTCO2 in A549 cells (green). The nuclear counter stain is DAPI (blue). Cells were fixed in paraformaldehyde, permeabilised with 0.25% Triton X100/PBS.
5. ICC staining MTCO2 in HepG2 cells (green). The nuclear counter stain is DAPI (blue). Cells were fixed in paraformaldehyde, permeabilised with 0.25% Triton X100/PBS.
6. Flow cytometric analysis of HepG2 cells with MTCO2 antibody at 1/50 dilution (red) compared with an unlabelled control (cells without incubation with primary antibody; black). Alexa Fluor 488-conjugated goat anti rabbit IgG was used as the secondary antibody.





Application: FCM,ICC/IF,IHC,IP,WB

Recommended WB: 1:1000-2000; IHC: 1:50-200; ICC/IF: 1:50-200; FCM: 1:50-100

Properties

Stability & Storage: Store at -20°C or -80°C for 12 months. Avoid repeated freeze-thaw cycles.

Shipping: Shipping with blue ice.

Antigen Details

Immunogen: Recombinant Protein

Uniprot ID: P00403

Synonyms: Cytochrome c oxidase polypeptide II;COX2_HUMAN;MT CO2;MTCO 2;Cytochrome c oxidase II; MT-CO2;MTCO2;COX2;COII;COXII;Cytochrome c oxidase subunit 2

Research Background

Cytochrome c oxidase subunit II (COX2), also designated COII, MTCO2 or oxidative phosphorylation (OxPhos) complex IV, subunit II, is one of three mitochondrial DNA (mtDNA) encoded subunits (MTCO1-3) of respiratory complex IV. Cytochrome c oxidase is a hetero-oligomeric enzyme composed of 13 subunits localized to the mitochondrial inner membrane and is the terminal enzyme complex of the electron transport chain. Complex IV

A DRUG SCREENING EXPERT

catalyzes the reduction of molecular oxygen to water. The energy released is used to transport protons across the mitochondrial inner membrane. The resulting electrochemical gradient is necessary for the synthesis of ATP. Complex IV contains 13 polypeptides; COX1, COX2 and COX3 (MTCO1-3) make up the catalytic core and are encoded by mtDNA while subunits IV, Va, Vb, VIa, VIb, VIc, VIIa, VIIb, VIIc and VIII are nuclear-encoded. Defects in COX2 are associated with tumor formation.

Inhibitor · Natural Compounds · Compound Libraries · Recombinant Proteins

This product is for Research Use Only · Not for Human or Veterinary or Therapeutic Use

Tel:781-999-4286 E_mail:info@targetmol.com Address:34 Washington Street,Wellesley Hills,MA 02481