

## Anti-MSY2 Antibody (2H206)

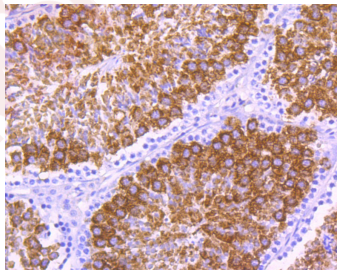
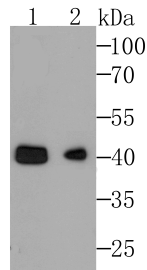
### Product Details

Reactivity:	Human,Mouse,Rat
Conjugation:	Unconjugated
Molecular Weight:	Theoretical: 38.5 kDa.
Clone:	2H206
Purification:	ProG affinity purified

### Applications

#### Verified Activity:

1. Western blot analysis of MYS2 on MCF-7 cell (1) and mouse testis tissue lysate using anti-MSY2 antibody at 1/1,000 dilution.
2. Immunohistochemical analysis of paraffin-embedded mouse testis tissue using anti-MSY2 antibody. Counter stained with hematoxylin.



Application:	IHC,WB
Recommended	WB: 1:500-2000; IHC: 1:50-200

### Properties

Stability & Storage:	Store at 2°C-8°C for 12 months, do not freeze.
Shipping:	Shipping with blue ice.

### Antigen Details

Immunogen:	Peptide
Uniprot ID:	Q9Y2T7
Synonyms:	DNA-binding protein C;Contrin;Germ cell specific Y box binding protein;Dbpc;CSDA3;MGC45104;MSY2 homolog;Germ cell-specific Y-box-binding protein;MGC118270;MSY 2;Y-box-binding protein 2;CSDA 3;YBOX2_HUMAN;FRGY2 homolog;Y box binding protein 2;RGD1305068;OTTMUSP00000006276;YBX 2;DNA binding protein C;YBX2

---

### Research Background

Major constituent of messenger ribonucleoprotein particles (mRNPs). Involved in the regulation of the stability and/or translation of germ cell mRNAs. Binds to Y-box consensus promoter element. Binds to full-length mRNA with high affinity in a sequence-independent manner. Binds to short RNA sequences containing the consensus site 5'-UCCAUCA-3' with low affinity and limited sequence specificity. Its binding with maternal mRNAs is necessary for its cytoplasmic retention. May mark specific mRNAs (those transcribed from Y-box promoters) in the nucleus for cytoplasmic storage, thereby linking transcription and mRNA storage/translational delay.

**Inhibitor · Natural Compounds · Compound Libraries · Recombinant Proteins**

This product is for Research Use Only· Not for Human or Veterinary or Therapeutic Use

Tel:781-999-4286 E\_mail:info@targetmol.com Address:34 Washington Street,Wellesley Hills,MA 02481