

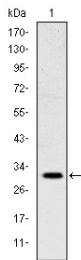
## Anti-MSX1 Antibody (5D282)

### Product Details

Reactivity:	Human
Conjugation:	Unconjugated
Molecular Weight:	Theoretical: 31 kDa.
Clone:	5D282
Purification:	ProA affinity purified

### Applications

Verified Activity: 1. Western blot analysis of MSX1 on NTERA-2 cell lysate using anti-MSX1 antibody at 1/1,000 dilution.



Application:	WB
Recommended	WB: 1:500-1000

### Properties

Stability & Storage:	Store at -20°C or -80°C for 12 months. Avoid repeated freeze-thaw cycles.
Shipping:	Shipping with blue ice.

### Antigen Details

Immunogen:	Recombinant Protein
Uniprot ID:	P28360
Synonyms:	OFC5;HOX 7;Msh homeobox 1;msh(Drosophila) homeo box homolog 1(formerly homeo box 7); Homeobox, msh like 1;MSH, Drosophila, Homolog of, 1;msh homeo box 1;Homeobox protein MSX1;HYD 1;msh homeobox homolog 1;MSX1;Hox7.1;Msh homeobox 1-like protein;Msh homeobox 1 like protein;HOX7;Hox-7;Muscle segment homeobox, Drosophila, Homolog of, 1; STHAG1;msh homeobox homolog 1(Drosophila);Homeobox protein MSX-1;Hox 7.1;Homeobox 7;Msh;msh homeo box homolog 1;HYD1;Muscle segment homeobox;MSX 1;Homeobox protein Hox-7

### Research Background

Drosophila, muscle segment (msh) homolog 1, homeo domain encoding gene, inhibiting MYOD1 expression, highly expressed in dental mesenchyme during critical bud stage, involved in epithelial-mesenchymal signaling in many organs, and in the pathogenesis of cleft lip and palate, interacting with MSX2 in mouse limb bud patterning. This gene encodes a member of the muscle segment homeobox gene family. The encoded protein functions as a

## A DRUG SCREENING EXPERT

---

transcriptional repressor during embryogenesis through interactions with components of the core transcription complex and other homeoproteins. It may also have roles in limb-pattern formation, craniofacial development, particularly odontogenesis, and tumor growth inhibition. Tissue specificity: Expressed in the developing nail bed mesenchyme.

**Inhibitor · Natural Compounds · Compound Libraries · Recombinant Proteins**

This product is for Research Use Only · Not for Human or Veterinary or Therapeutic Use

Tel: 781-999-4286 E\_mail: info@targetmol.com Address: 34 Washington Street, Wellesley Hills, MA 02481