

## Anti-MSI2 Antibody (1Q704)

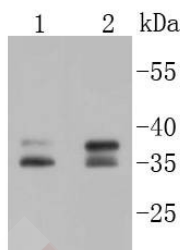
### Product Details

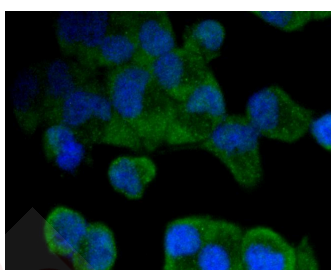
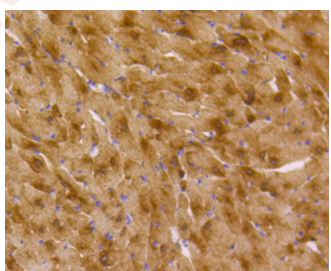
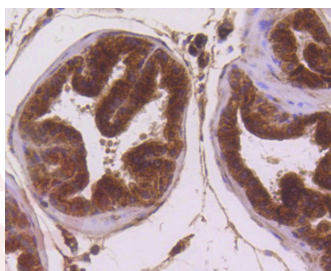
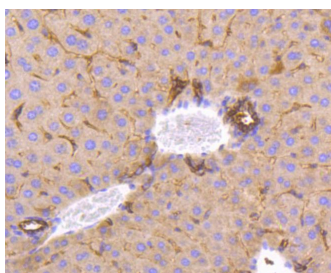
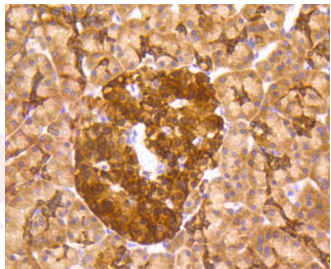
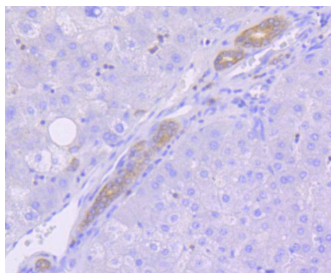
Ig Type:	IgG
Reactivity:	Human,Mouse,Rat
Conjugation:	Unconjugated
Molecular Weight:	Theoretical: 35/37 kDa.
Clone:	1Q704
Purification:	ProA affinity purified

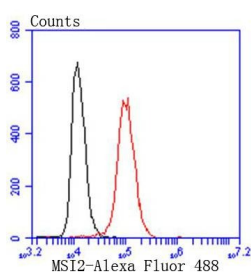
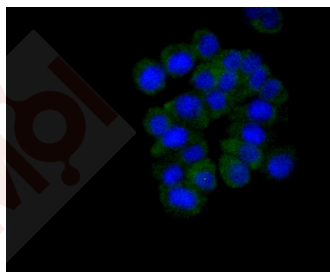
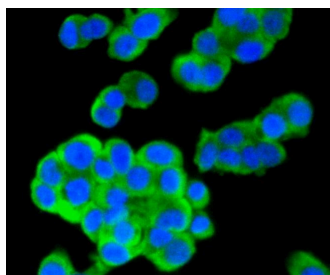
### Applications

1. Western blot analysis of MSI2 on different lysates using anti-MSI2 antibody at 1/1,000 dilution. Positive control: Lane 1: Lovo, Lane 2: PC-12.
2. Immunohistochemical analysis of paraffin-embedded human liver tissue using anti-MSI2 antibody. Counter stained with hematoxylin.
3. Immunohistochemical analysis of paraffin-embedded human pancreas tissue using anti-MSI2 antibody. Counter stained with hematoxylin.
4. Immunohistochemical analysis of paraffin-embedded mouse liver tissue using anti-MSI2 antibody. Counter stained with hematoxylin.
5. Immunohistochemical analysis of paraffin-embedded mouse prostate tissue using anti-MSI2 antibody. Counter stained with hematoxylin.
6. Immunohistochemical analysis of paraffin-embedded mouse heart tissue using anti-MSI2 antibody. Counter stained with hematoxylin.
7. ICC staining MSI2 in Hela cells (green). The nuclear counter stain is DAPI (blue). Cells were fixed in paraformaldehyde, permeabilised with 0.25% Triton X100/PBS.
8. ICC staining MSI2 in Lovo cells (green). The nuclear counter stain is DAPI (blue). Cells were fixed in paraformaldehyde, permeabilised with 0.25% Triton X100/PBS.
9. ICC staining MSI2 in PC-12 cells (green). The nuclear counter stain is DAPI (blue). Cells were fixed in paraformaldehyde, permeabilised with 0.25% Triton X100/PBS.
10. Flow cytometric analysis of Hela cells with MSI2 antibody at 1/50 dilution (red) compared with an unlabelled control (cells without incubation with primary antibody; black). Alexa Fluor 488-conjugated goat anti rabbit IgG was used as the secondary antibody.

Verified Activity:







Application: FCM, ICC/IF, IHC, WB

Recommended WB: 1:1000; IHC: 1:50-200; ICC/IF: 1:50-200; FCM: 1:50-100

### Properties

Stability & Storage: Store at -20°C or -80°C for 12 months. Avoid repeated freeze-thaw cycles.

Shipping: Shipping with blue ice.

### Antigen Details

Immunogen: Recombinant Protein

Uniprot ID: Q96DH6

Synonyms: RNA binding protein Musashi homolog 2; MGC3245; Msi 2; MSI2/HOXA9 fusion gene, included; Musashi homolog 2; Musashi RNA binding protein 2; Musashi, Drosophila, homolog of, 2; RNA-binding protein Musashi homolog 2; FLJ36569; MSI2H; Musashi 2; MSI2H\_HUMAN; WD 40 repeat protein MSI2; Musashi-2

### Research Background

Msi2 (musashi homolog 2), also known as MSI2H, is a 328 amino acid protein that localizes to the cytoplasm and contains two RRM (RNA recognition motif) domains. Expressed ubiquitously at low levels, Msi2 functions as an RNA binding protein that, by regulating the expression of target mRNAs, is thought to play a role in the proliferation and maintenance of stem cells within the central nervous system. Msi2 is subject to post-translational phosphorylation and is upregulated in response to brain injury, suggesting a role in healing and brain tissue regeneration. Chromosomal aberrations involving the Msi2 gene are associated with the progression of chronic myeloid leukemia. Multiple isoforms of Msi2 exist due to alternative splicing events.

**Inhibitor · Natural Compounds · Compound Libraries · Recombinant Proteins**

This product is for Research Use Only · Not for Human or Veterinary or Therapeutic Use

Tel:781-999-4286 E\_mail:info@targetmol.com Address:34 Washington Street,Wellesley Hills,MA 02481