

Anti-MSH6 Antibody (6V732)

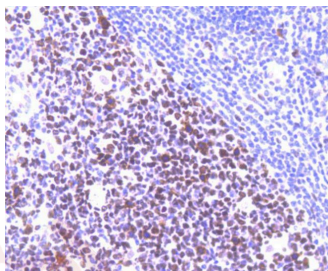
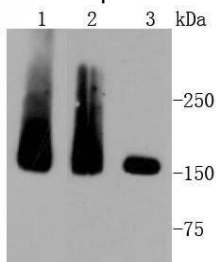
Product Details

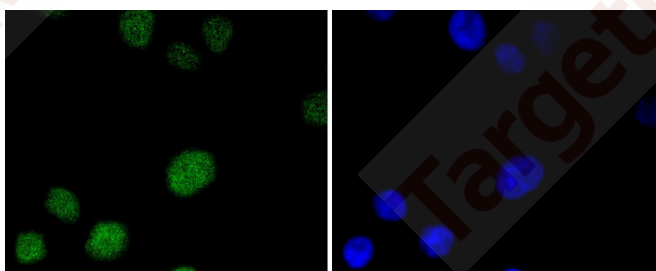
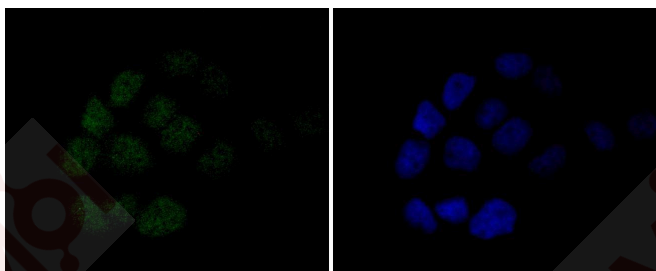
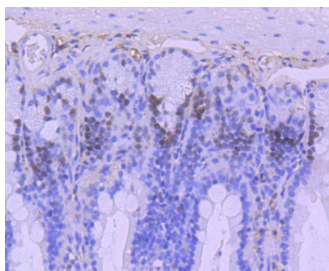
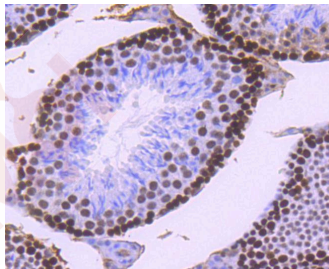
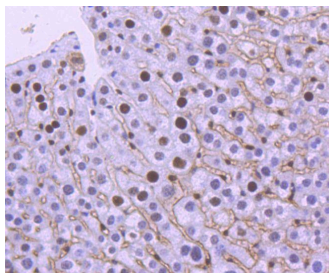
Ig Type:	IgG
Reactivity:	Human,Mouse,Rat
Conjugation:	Unconjugated
Molecular Weight:	Theoretical: 153 kDa.
Clone:	6V732
Purification:	ProA affinity purified

Applications

Verified Activity:

1. Western blot analysis of MSH6 on different lysates using anti-MSH6 antibody at 1/1,000 dilution. Positive control: Lane 1: HepG2, Lane 2: SW480, Lane 3: A549.
2. Immunohistochemical analysis of paraffin-embedded human tonsil tissue using anti-MSH6 antibody. Counter stained with hematoxylin.
3. Immunohistochemical analysis of paraffin-embedded mouse liver tissue using anti-MSH6 antibody. Counter stained with hematoxylin.
4. Immunohistochemical analysis of paraffin-embedded mouse testis tissue using anti-MSH6 antibody. Counter stained with hematoxylin.
5. Immunohistochemical analysis of paraffin-embedded mouse colon tissue using anti-MSH6 antibody. Counter stained with hematoxylin.
6. ICC staining MSH6 in A431 cells (green). The nuclear counter stain is DAPI (blue). Cells were fixed in paraformaldehyde, permeabilised with 0.25% Triton X100/PBS.
7. ICC staining MSH6 in A549 cells (green). The nuclear counter stain is DAPI (blue). Cells were fixed in paraformaldehyde, permeabilised with 0.25% Triton X100/PBS.





Application: ICC/IF,IHC,WB

Recommended WB: 1:1000-5000; IHC: 1:50-200; ICC/IF: 1:50-200

Properties

Stability & Storage: Store at -20°C or -80°C for 12 months. Avoid repeated freeze-thaw cycles.

Shipping: Shipping with blue ice.

Antigen Details

Immunogen: Recombinant Protein

Uniprot ID: P52701

Synonyms: hMSH6;HNPCC5;p160;mutS (E. coli) homolog 6;GTBP;MutS-alpha 160 kDa subunit;G/T mismatch binding protein;HSAP;MutS alpha 160 kDa subunit;GTMBP;Sperm associated protein;HNPCC 5;MSH 6;mutS homolog 6;DNA mismatch repair protein Msh6

Research Background

Multiple pathways promote short-sequence recombination (SSR) in *Saccharomyces cerevisiae*. When gene conversion is initiated by a double-strand break (DSB), any nonhomologous DNA that may be present at the ends must be removed before new DNA synthesis can be initiated. Removal of a 3' nonhomologous tail in *S. cerevisiae* depends on the nucleotide excision repair endonuclease Rad1/Rad10 and also on the mismatch repair proteins Msh2 and Msh3. Msh2 and Msh3, which function in mitotic recombination, recognize not only heteroduplex loops and mismatched basepairs, but also branched DNA structures with a free 3' tail. Msh2 and Msh6 form a protein complex required to repair mismatches generated during DNA replication. Yeast Msh2-Msh6 interact asymmetrically with the DNA through base-specific stacking and hydrogen bonding interactions and backbone contacts. The importance of these contacts decreases with increasing distance from the mismatch, implying that interactions at or near the mismatch are important for binding in a kinked DNA conformation.

Inhibitor · Natural Compounds · Compound Libraries · Recombinant Proteins

This product is for Research Use Only · Not for Human or Veterinary or Therapeutic Use

Tel:781-999-4286 E_mail:info@targetmol.com Address:34 Washington Street,Wellesley Hills,MA 02481