

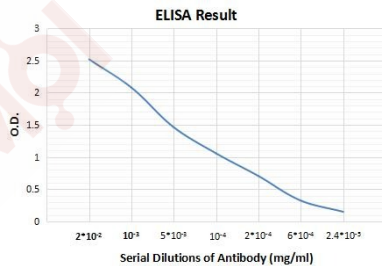
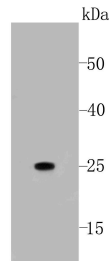
Mouse Anti-Human IgG Light Chain (Kappa Chain) Secondary Antibody-HRP (6Y698)

Product Details

Reactivity:	Human
Conjugation:	Unconjugated
Molecular Weight:	Theoretical: 25 kDa.
Clone:	6Y698
Purification:	Affinity purified

Applications

- Verified Activity:
- Western blot analysis on human IgG kchain using anti-Human IgG light chain (kappa chain) conjugated HRP Mouse mAb.
 - Representative standard curve using Mouse mAb.



Application:	WB
Recommended	WB: 1:2000-5000

Properties

- Stability & Storage: Store at -20°C or -80°C for 12 months. Avoid repeated freeze-thaw cycles. Keep away from direct sunlight.
- Shipping: Shipping with blue ice.

Antigen Details

Immunogen: Human IgG light chain

Antigen Species: human

Research Background

IgG is the most abundant immunoglobulin and is approximately equally distributed in blood and in tissue liquids, constituting 75% of serum immunoglobulins in humans. There are 4 subclasses: IgG1 (66%), IgG2 (23%), IgG3 (7%) and IgG4 (4%). This is the only isotype that can pass through the human placenta, thereby providing protection to the fetus in its first weeks of life before its own immune system has developed. This antibody reacts with kappa-light-chain of human IgG.

Inhibitor · Natural Compounds · Compound Libraries · Recombinant Proteins

This product is for Research Use Only · Not for Human or Veterinary or Therapeutic Use

Tel:781-999-4286 E_mail:info@targetmol.com Address:34 Washington Street,Wellesley Hills,MA 02481