

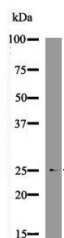
## Anti-Phospho-MOB4A/MOB1B (Tyr26) Polyclonal Antibody

### Product Details

Ig Type: IgG  
Reactivity: Human,Mouse,Rat  
Conjugation: Unconjugated  
Molecular Weight: Theoretical: 25 kDa.

### Applications

Verified Activity: 1. Western blot analysis MOB1A (Phospho-Tyr26) using A431 whole cell lysates.



Application: WB  
Recommended WB: 1:1000

### Properties

Stability & Storage: Store at -20°C or -80°C for 12 months. Avoid repeated freeze-thaw cycles.  
Shipping: Shipping with blue ice.

### Antigen Details

Immunogen: A synthesized phosphopeptide: human MOB1A around the phosphorylation site of Tyr26  
Antigen Species: human  
Uniprot ID: Q7L9L4  
Synonyms: p-MOB4A/MOB1B (Tyr26);p-MOB4A/MOB1B (Y26);MOB4A/MOB1B (p-Tyr26);MOB4A/MOB1B (p-Y26)

**Inhibitor · Natural Compounds · Compound Libraries · Recombinant Proteins**

This product is for Research Use Only · Not for Human or Veterinary or Therapeutic Use

Tel:781-999-4286 E\_mail:info@targetmol.com Address:34 Washington Street,Wellesley Hills,MA 02481