

Anti-MMP-3 Antibody (6H498)

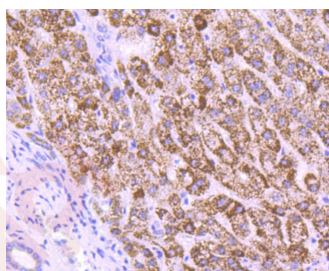
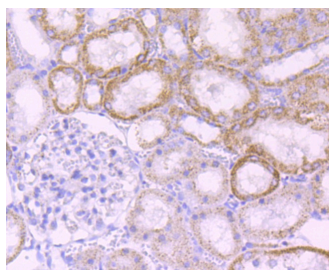
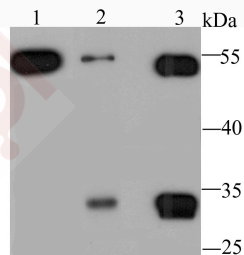
Product Details

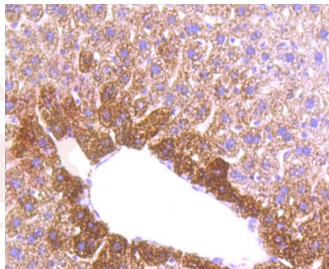
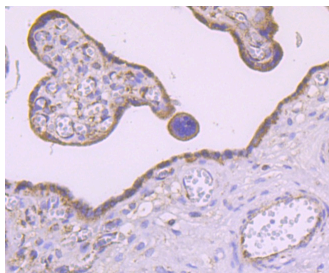
Ig Type:	IgG
Reactivity:	Human,Mouse,Rat
Conjugation:	Unconjugated
Clone:	6H498
Purification:	ProA affinity purified

Applications

Verified Activity:

1. Western blot analysis of MMP3 on different lysates using anti-MMP3 antibody at 1/1,000 dilution. Positive control: Lane 1: Human liver, Lane 2: Mouse lung, Lane 3: Rat liver.
2. Immunohistochemical analysis of paraffin-embedded rat kidney tissue using anti-MMP3 antibody. Counter stained with hematoxylin.
3. Immunohistochemical analysis of paraffin-embedded human liver tissue using anti-MMP3 antibody. Counter stained with hematoxylin.
4. Immunohistochemical analysis of paraffin-embedded human placenta tissue using anti-MMP3 antibody. Counter stained with hematoxylin.
5. Immunohistochemical analysis of paraffin-embedded mouse liver tissue using anti-MMP3 antibody. Counter stained with hematoxylin.





Application: IHC,WB

Recommended WB: 1:500-2000; IHC: 1:50-200

Properties

Stability & Storage: Store at -20°C or -80°C for 12 months. Avoid repeated freeze-thaw cycles.

Shipping: Shipping with blue ice.

Antigen Details

Immunogen: Recombinant Protein

Uniprot ID: P08254

Synonyms: Stromelysin-1;MMP3;SL-1;Matrix metalloproteinase-3 (MMP-3);Transin-1;STMY1

Research Background

The matrix metalloproteinases (MMP) are a family of peptidase enzymes responsible for the degradation of extracellular matrix components, including collagen, gelatin, fibronectin, laminin and proteoglycan. Transcription of MMP genes is differentially activated by phorbol ester, lipopolysaccharide (LPS) or staphylococcal enterotoxin B (SEB). MMP catalysis requires both calcium and zinc. MMP-3, MMP-10 and MMP-11 (also designated stromelysin-1, -2 and -3 respectively) activate procollagenase. MMP-3 activation of procollagenase can occur via two pathways. Direct activation by MMP-3 is slow and activation by MMP-3 in conjunction with tissue or plasma proteinases is rapid. MMP-10 is expressed in small intestine, and at lower levels in lung and heart. MMP-11 is specifically expressed in stromal cells of breast carcinomas and contributes to epithelial cell malignancies.

Inhibitor · Natural Compounds · Compound Libraries · Recombinant Proteins

This product is for Research Use Only · Not for Human or Veterinary or Therapeutic Use

Tel:781-999-4286

E_mail:info@targetmol.com

Address:34 Washington Street,Wellesley Hills,MA 02481