

Anti-MMP-12 Antibody (1B615)

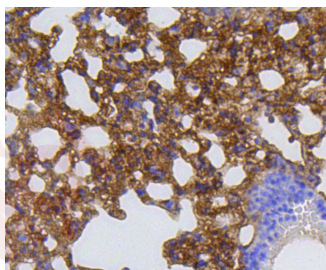
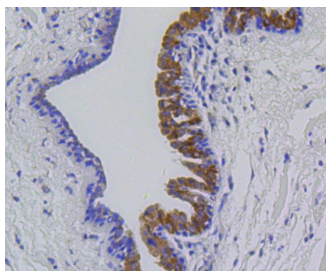
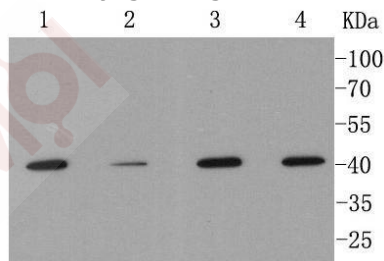
Product Details

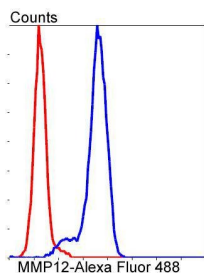
Ig Type:	IgG
Reactivity:	Human,Mouse,Rat
Conjugation:	Unconjugated
Molecular Weight:	Theoretical: 54/45/22 kDa.
Clone:	1B615
Purification:	ProA affinity purified

Applications

Verified Activity:

1. Western blot analysis of MMP12 on different cell lysates using anti-MMP12 antibody at 1/1,000 dilution. Positive control: Lane 1: A549, Lane 2: HeLa, Lane 3: MCF-7, Lane 4: THP-1.
2. Immunohistochemical analysis of paraffin-embedded human breast carcinoma tissue using anti-MMP12 antibody. Counter stained with hematoxylin.
3. Immunohistochemical analysis of paraffin-embedded mouse lung tissue using anti-MMP12 antibody. Counter stained with hematoxylin.
4. Flow cytometric analysis of A549 cells with MMP12 antibody at 1/50 dilution (blue) compared with an unlabelled control (cells without incubation with primary antibody; red). Alexa Fluor 488-conjugated goat anti rabbit IgG was used as the secondary antibody.





Application: FCM,ICC/IF,IHC,IP,WB

Recommended WB: 1:1000-2000; IHC: 1:50-200; ICC/IF: 1:50-200; FCM: 1:50-100

Properties

Stability & Storage: Store at -20°C or -80°C for 12 months. Avoid repeated freeze-thaw cycles.

Shipping: Shipping with blue ice.

Antigen Details

Immunogen: Recombinant Protein

Uniprot ID: P39900

Synonyms: hME;MMP 12

Research Background

The matrix metalloproteinases (MMP) are a family of peptidase enzymes responsible for the degradation of extracellular matrix components, including collagen, gelatin, fibronectin, laminin and proteoglycan. Transcription of MMP genes is differentially activated by phorbol ester, lipopolysaccharide (LPS) or staphylococcal enterotoxin B (SEB). MMP catalysis requires both calcium and zinc. MMP-12 (also designated macrophage metalloelastase) is produced in alveolar macrophages and degrades elastin. MMP-12 may contribute to elastin degradation occurring in granulomatous skin diseases and may also participate in macrophage migration through the epidermal and vascular basement membranes in inflammatory disorders.

Inhibitor · Natural Compounds · Compound Libraries · Recombinant Proteins

This product is for Research Use Only · Not for Human or Veterinary or Therapeutic Use

Tel:781-999-4286 E_mail:info@targetmol.com Address:34 Washington Street,Wellesley Hills,MA 02481
