

## Anti-MMP-1 Antibody (1H680)

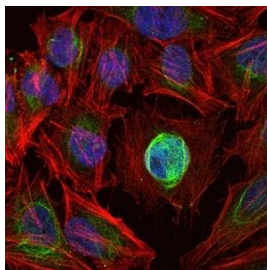
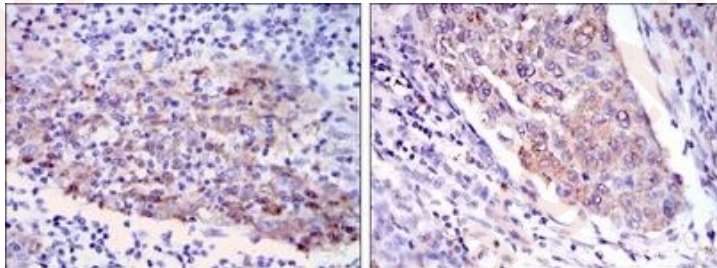
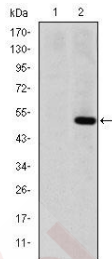
### Product Details

Reactivity:	Human
Conjugation:	Unconjugated
Molecular Weight:	Theoretical: 54 kDa.
Clone:	1H680
Purification:	Affinity purification

### Applications

#### Verified Activity:

1. Western Blot analysis using MMP-1 Monoclonal Antibody against HEK293 (1) and MMP1-hlgGfc transfected HEK293 (2) cell lysate.
2. Immunohistochemistry analysis of paraffin-embedded human cervical cancer tissues (left) and human kidney cancer tissues (right) with DAB staining using MMP-1 Monoclonal Antibody.
3. Immunofluorescence analysis of Hela cells using MMP-1 Monoclonal Antibody.



Application: ELISA,FCM,IF,IHC,WB

Recommended WB: 1:500-2000; IHC: 1:200-1000; IF: 1:200-1000; FCM: 1:200-400; ELISA: 1:10000

**Properties**

Stability & Storage: Store at -20°C or -80°C for 12 months. Avoid repeated freeze-thaw cycles.

Shipping: Shipping with blue ice.

---

**Antigen Details**

Immunogen: Recombinant Protein: human MMP-1

Antigen Species: human

Gene ID: 4312

Uniprot ID: P03956

Synonyms: matrix metalloproteinase 1;CLGN;CLG

**Inhibitor · Natural Compounds · Compound Libraries · Recombinant Proteins**

This product is for Research Use Only · Not for Human or Veterinary or Therapeutic Use

Tel:781-999-4286 E\_mail:info@targetmol.com Address:34 Washington Street,Wellesley Hills,MA 02481