

## Anti-MMEL1 Antibody (9N137)

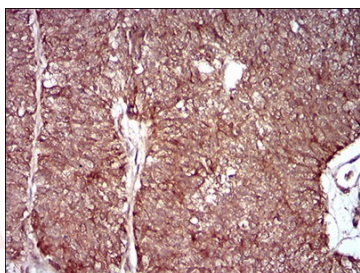
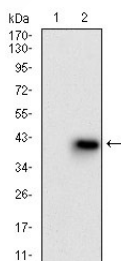
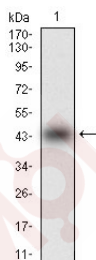
### Product Details

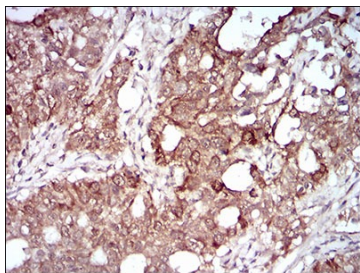
Reactivity:	Human
Conjugation:	Unconjugated
Molecular Weight:	Theoretical: 90 kDa.
Clone:	9N137
Purification:	ProA affinity purified

### Applications

#### Verified Activity:

1. Western blot analysis of MMEL1 on human MMEL1 recombinant protein using anti-MMEL1 antibody at 1/1,000 dilution.
2. Western blot analysis of MMEL1 on HEK293 (1) and MMEL1-hlgGfc transfected HEK293 (2) cell lysate using anti-MMEL1 antibody at 1/1,000 dilution.
3. Immunohistochemical analysis of paraffin-embedded human ovarian cancer tissue using anti-MMEL1 antibody. Counter stained with hematoxylin.
4. Immunohistochemical analysis of paraffin-embedded human cervical cancer tissue using anti-MMEL1 antibody. Counter stained with hematoxylin.





Application: FCM,IHC,WB

Recommended WB: 1:500-2000; IHC: 1:50-200; FCM: 1:50-100

---

#### Properties

Stability & Storage: Store at -20°C or -80°C for 12 months. Avoid repeated freeze-thaw cycles.

Shipping: Shipping with blue ice.

---

#### Antigen Details

Immunogen: Recombinant Protein

Uniprot ID: Q495T6

Synonyms: NL1;Membrane metallo endopeptidase like 1;Mel transforming oncogene like 1;Nepilysin 2; NL2;MMEL 1;Nepilysin Like 1;SEP;Membrane metallo endopeptidase like 2;Soluble secreted endopeptidase

---

#### Research Background

Metalloprotease involved in sperm function, possibly by modulating the processes of fertilization and early embryonic development. Degrades a broad variety of small peptides with a preference for peptides shorter than 3 kDa containing neutral bulky aliphatic or aromatic amino acid residues. Shares the same substrate specificity with MME and cleaves peptides at the same amide bond (By similarity).

**Inhibitor · Natural Compounds · Compound Libraries · Recombinant Proteins**

This product is for Research Use Only. Not for Human or Veterinary or Therapeutic Use

Tel:781-999-4286 E\_mail:info@targetmol.com Address:34 Washington Street,Wellesley Hills,MA 02481

---