

Anti-MLKL Antibody (3Z198)

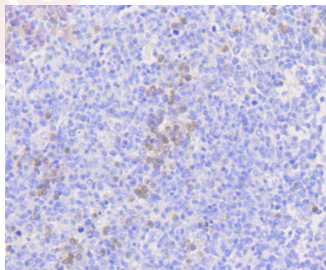
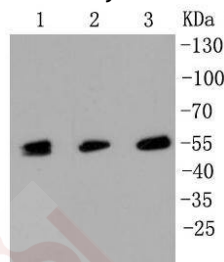
Product Details

Ig Type:	IgG
Reactivity:	Human
Conjugation:	Unconjugated
Molecular Weight:	Theoretical: 54 kDa.
Clone:	3Z198
Purification:	ProA affinity purified

Applications

Verified Activity:

1. Western blot analysis of MLKL on different cell lysates using anti-MLKL antibody at 1/1,000 dilution. Positive control: Lane 1: HT29, Lane 2: HUVEC, Lane 3: Hela.
2. Immunohistochemical analysis of paraffin-embedded human tonsil tissue using anti-MLKL antibody. Counter stained with hematoxylin.



Application:	IHC, WB
Recommended	WB: 1:1000-5000; IHC: 1:50-200

Properties

Stability & Storage: Store at -20°C or -80°C for 12 months. Avoid repeated freeze-thaw cycles.

Shipping: Shipping with blue ice.

Antigen Details

Immunogen: Recombinant Protein

Uniprot ID: Q8NB16

Research Background

MLKL (mixed lineage kinase domain-like) is a 471 amino acid protein that contains one protein kinase domain which is thought to be catalytically inactive. The gene encoding MLKL maps to chromosome 16 and is expressed as two isoforms which are produced by alternative splicing events. Chromosome 16, which is associated with a variety of genetic disorders, encodes over 900 genes and comprises nearly 3% of the human genome. The GAN gene is located on chromosome 16 and, with mutation, may lead to giant axonal neuropathy, a nervous system disorder characterized by increasing malfunction with growth. The rare disorder Rubinstein-Taybi syndrome is associated with chromosome 16, as is Crohn's disease, which is a gastrointestinal inflammatory condition.

Inhibitor · Natural Compounds · Compound Libraries · Recombinant Proteins

This product is for Research Use Only · Not for Human or Veterinary or Therapeutic Use

Tel: 781-999-4286 E_mail: info@targetmol.com Address: 34 Washington Street, Wellesley Hills, MA 02481