

Anti-Phospho-MLKL (S358) Polyclonal Antibody

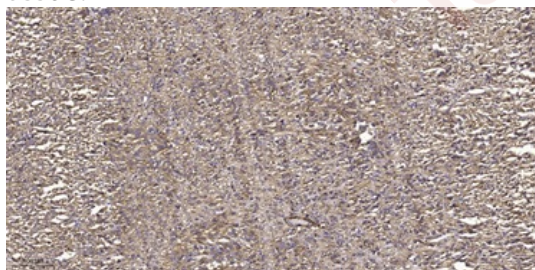
Product Details

Ig Type:	IgG
Reactivity:	Human
Conjugation:	Unconjugated
Molecular Weight:	Theoretical: 55 kDa.
Purification:	The antibody was affinity-purified from rabbit serum by affinity-chromatography using specific immunogen.

Applications

Verified Activity:

1. Immunohistochemical analysis of paraffin-embedded human small intestinal carcinoma tissue.



Application:	ICC/IF,IHC-P,WB
Recommended	IHC-P: 1:100-500; ICC/IF: 1:100-500; WB: 1:500-2000

Properties

Stability & Storage:	Store at -20°C or -80°C for 12 months. Avoid repeated freeze-thaw cycles.
Shipping:	Shipping with blue ice.

Antigen Details

Immunogen:	A synthesized phosphopeptide: human MLKL around the phosphorylation site of S358
Antigen Species:	human
Synonyms:	MLKL (p-S358);p-MLKL (S358)

Inhibitor · Natural Compounds · Compound Libraries · Recombinant Proteins

This product is for Research Use Only. Not for Human or Veterinary or Therapeutic Use

Tel:781-999-4286 E_mail:info@targetmol.com Address:34 Washington Street,Wellesley Hills,MA 02481