

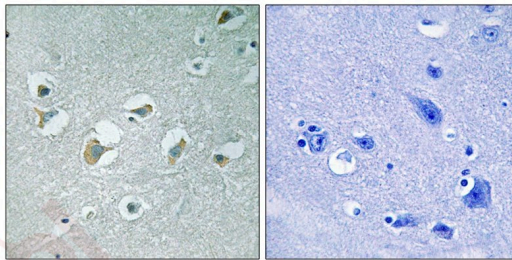
## Anti-Phospho-MLK1/2 (Thr312/266) Polyclonal Antibody

### Product Details

|                   |  |
|-------------------|--|
| Ig Type:          | IgG  |
| Reactivity:       | Human,Mouse  |
| Conjugation:      | Unconjugated   |
| Molecular Weight: | Actual: 121 kDa.   |
| Purification:     | Antibodies were produced by immunizing rabbits with synthetic phosphopeptide and KLH conjugates. Antibodies were purified by affinity-chromatography using epitope-specific phosphopeptide. Non-phospho specific antibodies were removed by chromatography using non-phosphopeptide. |

### Applications

Verified Activity: 1. Immunohistochemical analysis of paraffin-embedded human brain tissue using MLK1/2 (Phospho-Thr312/266) antibody TMAC-02608 (left) or the same antibody preincubated with blocking peptide (right).



|              |               |
|--------------|---------------|
| Application: | IHC           |
| Recommended  | IHC: 1:50-100 |

### Properties

|                      |   |
|----------------------|---|
| Stability & Storage: | Store at -20°C or -80°C for 12 months. Avoid repeated freeze-thaw cycles. |
| Shipping:            | Shipping with blue ice.   |

### Antigen Details

|                  |   |
|------------------|---|
| Immunogen:       | Peptide sequence around phosphorylation site of threonine 312/266(A-G-T(p)-Y-A) derived from Human MLK1/2 |
| Antigen Species: | human   |
| Uniprot ID:      | P80192 & Q02779   |
| Synonyms:        | MLK1/2 (p-Thr312/266);p-MLK1/2 (Thr312/266);MLK1/2 (p-T312/266);p-MLK1/2 (T312/266)                       |

### Research Background

The protein encoded by this gene is a member of the serine/threonine kinase family. This kinase has been shown to activate MAPK8/JNK and MKK4/SEK1, and this kinase itself can be phosphorylated, and thus activated by JNK kinases. This kinase functions preferentially on the JNK signaling pathway, and is reported to be involved in nerve growth factor (NGF) induced neuronal apoptosis.

**Inhibitor · Natural Compounds · Compound Libraries · Recombinant Proteins**

This product is for Research Use Only · Not for Human or Veterinary or Therapeutic Use

Tel:781-999-4286 E\_mail:info@targetmol.com Address:34 Washington Street,Wellesley Hills,MA 02481