

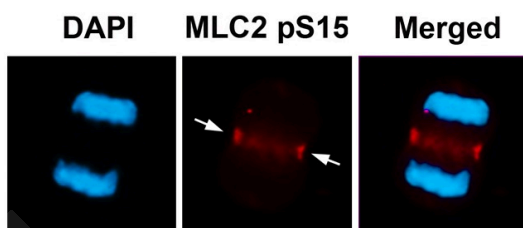
## Anti-Phospho-MLC2 (Ser15) Polyclonal Antibody

## Product Details

Ig Type:	IgG
Reactivity:	Human
Conjugation:	Unconjugated
Molecular Weight:	Actual: 20 kDa.
Purification:	Antibodies were produced by immunizing rabbits with synthetic phosphopeptide and KLH conjugates. Antibodies were purified by affinity-chromatography using epitope-specific phosphopeptide. Non-phospho specific antibodies were removed by chromatography using non-phosphopeptide.

## Applications

Verified Activity: 1. Immunofluorescence staining of methanol-fixed U87 cells using MLC2 (Phospho-Ser15) Antibody TMAC-02602.



Application: IF, WB  
Recommended: WB: 1:500-1000; IF: 1:100-200

## Properties

Stability & Storage: Store at -20°C or -80°C for 12 months. Avoid repeated freeze-thaw cycles.  
Shipping: Shipping with blue ice.

## Antigen Details

Immunogen: Peptide sequence around phosphorylation site of serine 15 (A-N-S(p)-N-V) derived from Human MLC2  
Antigen Species: human  
Uniprot ID: P10916  
Synonyms: MLC2 (p-Ser15); p-MLC2 (Ser15); p-MLC2 (S15); MLC2 (p-S15)

**Inhibitor · Natural Compounds · Compound Libraries · Recombinant Proteins**

This product is for Research Use Only. Not for Human or Veterinary or Therapeutic Use

Tel: 781-999-4286 E\_mail: info@targetmol.com Address: 34 Washington Street, Wellesley Hills, MA 02481