

## Anti-Midkine Antibody (9Z235)

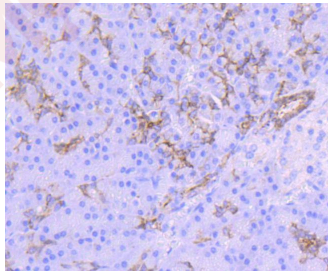
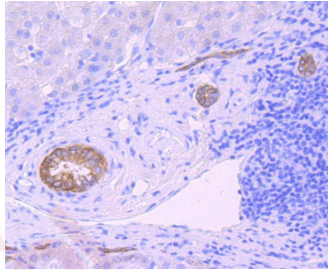
### Product Details

Ig Type:	IgG
Reactivity:	Human
Conjugation:	Unconjugated
Molecular Weight:	Theoretical: 16 kDa.
Clone:	9Z235
Purification:	ProA affinity purified

### Applications

#### Verified Activity:

1. Immunohistochemical analysis of paraffin-embedded human liver cancer tissue using anti-Midkine antibody. Counter stained with hematoxylin.
2. Immunohistochemical analysis of paraffin-embedded human pancreas tissue using anti-Midkine antibody. Counter stained with hematoxylin.



Application:	IHC,IP,WB
Recommended	WB: 1:500-1000; IHC: 1:50-200

### Properties

Stability & Storage:	Store at -20°C or -80°C for 12 months. Avoid repeated freeze-thaw cycles.
Shipping:	Shipping with blue ice.

### Antigen Details

Immunogen: Recombinant Protein  
Uniprot ID: P21741  
Synonyms: MKARAP;NEGF2;MK1;MDK;MK;ARAP;MEK

---

### Research Background

Midkine, or MK, is a heparin-binding molecule involved in the regulation of growth and differentiation during embryogenesis. MK expression is tightly regulated during embryonic development by steroid receptors of the retinoic acid superfamily. The mature human MK protein is 118 amino acids in length and contains five intrachain disulfide bonds. MK is a non-glycosylated protein that shows greater than 87% identity between human and mouse. The carboxy-terminus of MK contains the principle heparin-binding site and the molecule's neurite-promoting sequences; both the amino- and carboxy-terminal sequences are required for the molecule's neurotrophic properties. An association between overexpression of MK and colon adenocarcinoma has been shown in families suffering from familial polyposis. In addition, MK functions to enhance the activity of plasminogen activator (PA).

**Inhibitor · Natural Compounds · Compound Libraries · Recombinant Proteins**

This product is for Research Use Only · Not for Human or Veterinary or Therapeutic Use

Tel:781-999-4286 E\_mail:info@targetmol.com Address:34 Washington Street,Wellesley Hills,MA 02481