

Anti-mGluR1 Antibody (4L730)

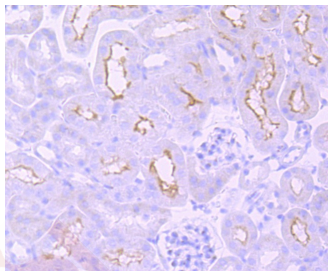
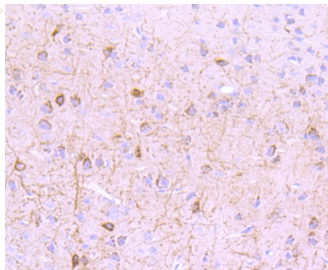
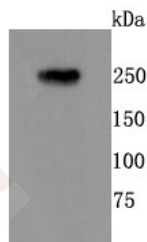
Product Details

Ig Type:	IgG
Reactivity:	Human,Mouse,Rat
Conjugation:	Unconjugated
Molecular Weight:	Theoretical: 200 kDa.
Clone:	4L730
Purification:	ProA affinity purified

Applications

Verified Activity:

1. Western blot analysis of mGluR1 on rat brain cells lysates using anti-mGluR1 antibody at 1/500 dilution.
2. Immunohistochemical analysis of paraffin-embedded mouse brain tissue using anti-mGluR1 antibody. Counter stained with hematoxylin.
3. Immunohistochemical analysis of paraffin-embedded mouse kidney tissue using anti-mGluR1 antibody. Counter stained with hematoxylin.



Application:	IHC,WB
Recommended	WB: 1:500-1000; IHC: 1:50-200

Properties

Stability & Storage: Store at -20°C or -80°C for 12 months. Avoid repeated freeze-thaw cycles.

Shipping: Shipping with blue ice.

Antigen Details

Immunogen: Recombinant Protein

Uniprot ID: Q13255

Synonyms: glutamate receptor, metabotropic 1; GRM1A; GPRC1A; MGLUR1A; mGluR 1; SCAR13; Glutamate receptor metabotropic 1; GRM1-Alpha; GRM1; Metabotropic glutamate receptor 1; GRM1_HUMAN; MGLUR1-Alpha; mGlu1

Research Background

G-protein coupled receptor for glutamate. Ligand binding causes a conformation change that triggers signaling via guanine nucleotide-binding proteins (G proteins) and modulates the activity of down-stream effectors. Signaling activates a phosphatidylinositol-calcium second messenger system. May participate in the central action of glutamate in the CNS, such as long-term potentiation in the hippocampus and long-term depression in the cerebellum.

Inhibitor · Natural Compounds · Compound Libraries · Recombinant Proteins

This product is for Research Use Only · Not for Human or Veterinary or Therapeutic Use

Tel: 781-999-4286 E_mail: info@targetmol.com Address: 34 Washington Street, Wellesley Hills, MA 02481