

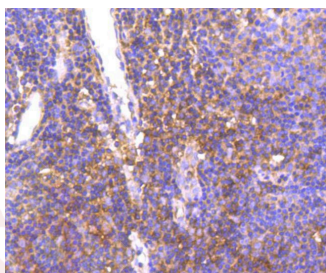
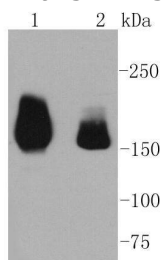
## Anti-HGFR/c-Met Antibody (4N790)

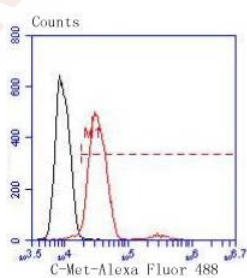
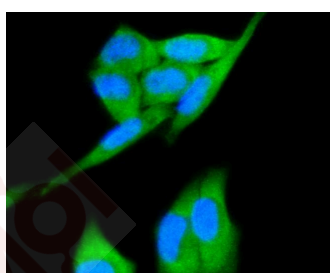
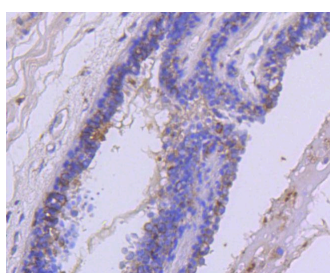
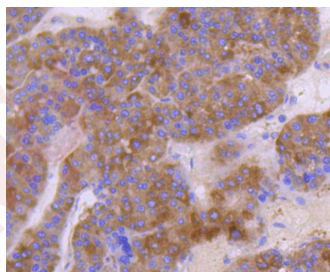
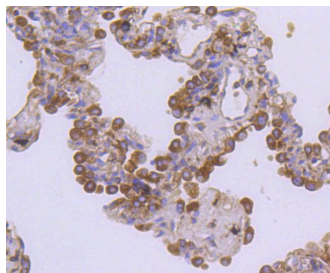
### Product Details

Ig Type:	IgG
Reactivity:	Human
Conjugation:	Unconjugated
Molecular Weight:	Theoretical: 155 kDa.
Clone:	4N790
Purification:	ProA affinity purified

### Applications

- Verified Activity:
1. Western blot analysis of Met on different lysates using anti-Met antibody at 1/1,000 dilution. Positive control: Lane 1: Hela, Lane 2: HepG2.
  2. Immunohistochemical analysis of paraffin-embedded human tonsil tissue using anti-Met antibody. Counter stained with hematoxylin.
  3. Immunohistochemical analysis of paraffin-embedded human lung cancer tissue using anti-Met antibody. Counter stained with hematoxylin.
  4. Immunohistochemical analysis of paraffin-embedded human liver cancer tissue using anti-Met antibody. Counter stained with hematoxylin.
  5. Immunohistochemical analysis of paraffin-embedded human breast carcinoma tissue using anti-Met antibody. Counter stained with hematoxylin.
  6. ICC staining Met in Hela cells (green). The nuclear counter stain is DAPI (blue). Cells were fixed in paraformaldehyde, permeabilised with 0.25% Triton X100/PBS.
  7. Flow cytometric analysis of Hela cells with Met antibody at 1/50 dilution (red) compared with an unlabelled control (cells without incubation with primary antibody; black). Alexa Fluor 488-conjugated goat anti rabbit IgG was used as the secondary antibody.





Application: FCM, ICC/IF, IHC, WB

Recommended WB: 1:1000-5000; IHC: 1:50-200; ICC/IF: 1:50-200; FCM: 1:50-100

### Properties

Stability & Storage: Store at -20°C or -80°C for 12 months. Avoid repeated freeze-thaw cycles.

Shipping: Shipping with blue ice.

### Antigen Details

Immunogen: Recombinant Protein  
Uniprot ID: P08581  
Synonyms: MET proto-oncogene, receptor tyrosine kinase;AUTS9;DFNB97;c-Met;HGFR;RCCP2

---

### Research Background

The c-Met oncogene was originally isolated from a chemical carcinogen-treated human osteogenic sarcoma cell line by transfection analysis in NIH/3T3 cells. The Met proto-oncogene product was identified as a transmembrane receptor-like protein with tyrosine kinase activity that is expressed in many tissues. A high proportion of spontaneous NIH/3T3 transformants overexpress c-Met and by transfection analysis the c-Met proto-oncogene has been shown to exhibit transforming activity. Tyrosine phosphorylation of apparently normal Met protein has also been observed in certain human gastric carcinoma cell lines. The c-Met gene product has been identified as the cell-surface receptor for hepatocyte growth factor, a plasminogen-like protein thought to be a humoral mediator of liver regeneration.

**Inhibitor · Natural Compounds · Compound Libraries · Recombinant Proteins**

This product is for Research Use Only · Not for Human or Veterinary or Therapeutic Use

Tel:781-999-4286 E\_mail:info@targetmol.com Address:34 Washington Street,Wellesley Hills,MA 02481