

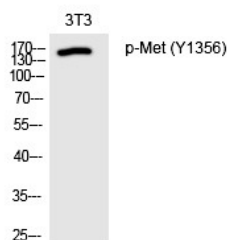
Anti-Phospho-HGFR/c-Met (Tyr1356) Polyclonal Antibody

Product Details

Ig Type:	IgG
Reactivity:	Human,Mouse,Rat
Conjugation:	Unconjugated
Molecular Weight:	Actual: 160 kDa.
Purification:	The antibody was affinity-purified from rabbit antiserum by affinity-chromatography using epitope-specific immunogen.

Applications

Verified Activity: 1. Western Blot analysis of 3T3 cells using Phospho-Met (Y1356) Polyclonal Antibody.



Application: ELISA,WB
Recommended WB: 1:500-2000; ELISA: 1:10000

Properties

Stability & Storage: Store at -20°C or -80°C for 12 months. Avoid repeated freeze-thaw cycles.
Shipping: Shipping with blue ice.

Antigen Details

Immunogen: A synthesized phosphopeptide: human Met around the phosphorylation site of Y1356
Antigen Species: human
Uniprot ID: P08581
Synonyms: p-HGFR/c-Met (Y1356);HGFR/c-Met (p-Tyr1356);p-HGFR/c-Met (Tyr1356);HGFR/c-Met (p-Y1356)

Inhibitor · Natural Compounds · Compound Libraries · Recombinant Proteins

This product is for Research Use Only. Not for Human or Veterinary or Therapeutic Use

Tel:781-999-4286 E_mail:info@targetmol.com Address:34 Washington Street,Wellesley Hills,MA 02481