

Anti-Phospho-Mer/Dtk (Tyr749/681) Polyclonal Antibody

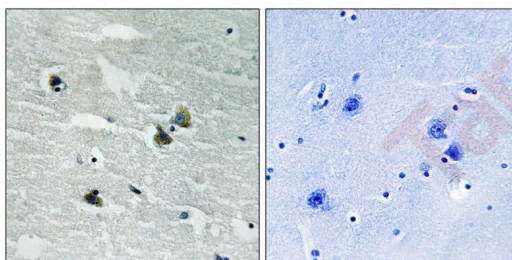
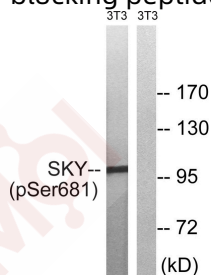
Product Details

Ig Type:	IgG
Reactivity:	Human,Mouse,Rat,Chicken,zebrafish
Conjugation:	Unconjugated
Molecular Weight:	Actual: 97 kDa.
Purification:	Antibodies were produced by immunizing rabbits with synthetic phosphopeptide and KLH conjugates. Antibodies were purified by affinity-chromatography using epitope-specific phosphopeptide. Non-phospho specific antibodies were removed by chromatography using non-phosphopeptide.

Applications

Verified Activity:

- Western blot analysis of extracts from 3T3 cells treated with EGF using MER/SKY (Phospho-Tyr749/681) Antibody TMAC-02559. The lane on the right is treated with the antigen-specific peptide.
- Immunohistochemical analysis of paraffin-embedded human brain tissue using MER/SKY (Phospho-Tyr749/681) antibody TMAC-02559 (left) or the same antibody preincubated with blocking peptide (right).



Application:	IHC,WB
Recommended	WB: 1:500-1000; IHC: 1:50-100

Properties

Stability & Storage:	Store at -20°C or -80°C for 12 months. Avoid repeated freeze-thaw cycles.
Shipping:	Shipping with blue ice.

Antigen Details

Immunogen:	Peptide sequence around phosphorylation site of tyrosine 749/681(K-I-Y(p)-S-G) derived from Human MER/SKY
Antigen Species:	human
Uniprot ID:	Q12866 & Q06418
Synonyms:	Mer/Dtk (p-Y749/681);p-Mer/Dtk (Y749/681);p-Mer/Dtk (Tyr749/681);Mer/Dtk (p-Tyr749/681)

Research Background

This gene is a member of the MER/AXL/TYRO3 receptor kinase family and encodes a transmembrane protein with two fibronectin type-III domains, two Ig-like C2-type (immunoglobulin-like) domains, and one tyrosine kinase domain. Mutations in this gene have been associated with disruption of the retinal pigment epithelium (RPE) phagocytosis pathway and onset of autosomal recessive retinitis pigmentosa (RP).

Inhibitor · Natural Compounds · Compound Libraries · Recombinant Proteins

This product is for Research Use Only · Not for Human or Veterinary or Therapeutic Use

Tel:781-999-4286 E_mail:info@targetmol.com Address:34 Washington Street,Wellesley Hills,MA 02481