

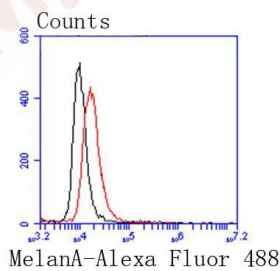
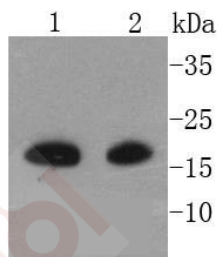
Anti-MLANA Antibody (3P758)

Product Details

Ig Type:	IgG
Reactivity:	Human
Conjugation:	Unconjugated
Molecular Weight:	Theoretical: 20 kDa.
Clone:	3P758
Purification:	ProA affinity purified

Applications

- Verified Activity:
1. Western blot analysis of MelanA on different lysates using anti-MelanA antibody at 1/1,000 dilution. Positive control: Lane 1: Melanoma, Lane 2: B16-F1.
 2. Flow cytometric analysis of B16-F1 cells with MelanA antibody at 1/50 dilution (red) compared with an unlabelled control (cells without incubation with primary antibody; black). Alexa Fluor 488-conjugated goat anti rabbit IgG was used as the second antibody.



Application:	FCM,IHC,WB
Recommended	WB: 1:1000-2000; IHC: 1:50-200; FCM: 1:50-100

Properties

- Stability & Storage: Store at -20°C or -80°C for 12 months. Avoid repeated freeze-thaw cycles.
- Shipping: Shipping with blue ice.

Antigen Details

Immunogen: Recombinant Protein
Uniprot ID: Q16655
Synonyms: MART-1;MART1;MLANA;Antigen SK29-AA;Melanoma antigen recognized by T-cells 1;Antigen LB39-AA;Protein Melan-A

Research Background

Melanoma-associated antigens recognized by cytotoxic T lymphocytes (CTL) have been grouped into three categories: melanocyte differentiation antigens, cancer/testis-specific antigens and mutated or aberrantly expressed antigens. Many of these antigens consist of peptides that are presented to T cells by HLA molecules; they represent potential targets for cancer immunotherapy. Melan-A (also designated MART-1) is a melanocyte differentiation antigen that is specific to melanomas, melanocyte cell lines and retina. Melan-A peptide is recognized by most HLA-A2-restricted tumor-specific tumor-infiltrating lymphocytes in patients with melanoma. Antimelanoma cytotoxic T lymphocytes can be generated with a Melan-A peptide, implicating Melan-A as a potential candidate for antigen-specific immunotherapy in melanoma patients.

Inhibitor · Natural Compounds · Compound Libraries · Recombinant Proteins

This product is for Research Use Only · Not for Human or Veterinary or Therapeutic Use

Tel:781-999-4286 E_mail:info@targetmol.com Address:34 Washington Street,Wellesley Hills,MA 02481