

Anti-MAP3K3 Antibody (2Q519)

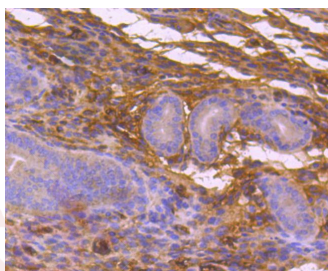
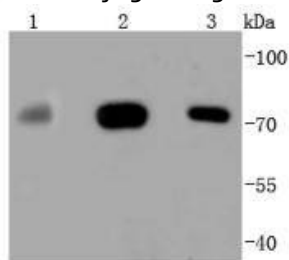
Product Details

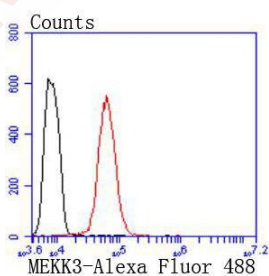
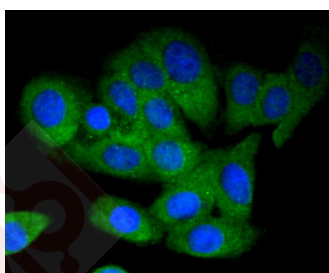
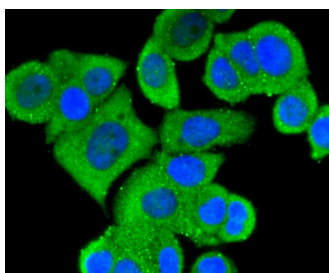
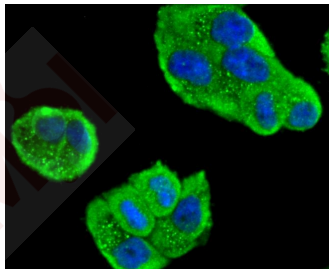
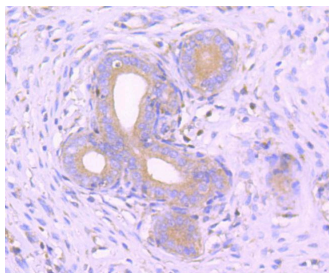
Ig Type:	IgG
Reactivity:	Human,Mouse,Rat
Conjugation:	Unconjugated
Molecular Weight:	Theoretical: 71 kDa.
Clone:	2Q519
Purification:	ProA affinity purified

Applications

Verified Activity:

1. Western blot analysis of MEKK3 on different lysates using anti-MEKK3 antibody at 1/1,000 dilution. Positive control: Lane 1: Hela, Lane 2: 293T, Lane 3: A431.
2. Immunohistochemical analysis of paraffin-embedded mouse uterus tissue using anti-MEKK3 antibody. Counter stained with hematoxylin.
3. Immunohistochemical analysis of paraffin-embedded rat uterus tissue using anti-MEKK3 antibody. Counter stained with hematoxylin.
4. ICC staining MEKK3 in Hela cells (green). The nuclear counter stain is DAPI (blue). Cells were fixed in paraformaldehyde, permeabilised with 0.25% Triton X100/PBS.
5. ICC staining MEKK3 in MCF-7 cells (green). The nuclear counter stain is DAPI (blue). Cells were fixed in paraformaldehyde, permeabilised with 0.25% Triton X100/PBS.
6. ICC staining MEKK3 in SKOV-3 cells (green). The nuclear counter stain is DAPI (blue). Cells were fixed in paraformaldehyde, permeabilised with 0.25% Triton X100/PBS.
7. Flow cytometric analysis of Hela cells with MEKK3 antibody at 1/50 dilution (red) compared with an unlabelled control (cells without incubation with primary antibody; black). Alexa Fluor 488-conjugated goat anti rabbit IgG was used as the secondary antibody.





Application: FCM, ICC/IF, IHC, IP, WB

Recommended WB: 1:1000-2000; IHC: 1:50-200; ICC/IF: 1:100-500; FCM: 1:50-100

Properties

Stability & Storage: Store at -20°C or -80°C for 12 months. Avoid repeated freeze-thaw cycles.

Shipping: Shipping with blue ice.

Antigen Details

Immunogen:	Recombinant Protein
Uniprot ID:	Q99759
Synonyms:	MAPK/ERK kinase kinase 3;MAPKKK3;MEK kinase 3;MAP/ERK kinase kinase 3;MEKK 3;MEKK3;M3K3_HUMAN;Mitogen activated protein kinase kinase 3

Research Background

MAP kinase kinase kinase (MEKK3 or MAP3K3) is a serine/threonine protein kinase that activates SAPK and ERK via phosphorylation and activation of their respective MAP kinase kinases, SEK and MEK1/2. MEKK3 also stimulates MEK5 via activation of ERK5/BMK1, which is at least partly regulated by a direct interaction between MEK5 and MEKK3 via p67phox-Bem1p (PB1) protein-protein interaction domains found in both proteins. MEKK3 modulates NF- κ B activation in response to a variety of agonists including TNF α , LPS, IL-1 and LPA. Despite reports showing that phosphorylation of MEKK3 at Ser526 within the activation loop is necessary for kinase activation, at least one study suggests that dual phosphorylation at Thr516 and Ser520 is required for LPA-stimulated IKK β /NF- κ B activation. Phosphorylation at Thr294 appears to negatively regulate MEKK3 by promoting 14-3-3 β binding and inhibition of the kinase activity.

Inhibitor · Natural Compounds · Compound Libraries · Recombinant Proteins

This product is for Research Use Only· Not for Human or Veterinary or Therapeutic Use

Tel:781-999-4286 E_mail:info@targetmol.com Address:34 Washington Street,Wellesley Hills,MA 02481