

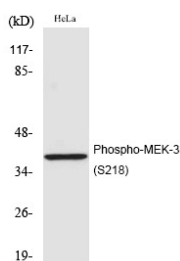
Anti-Phospho-MAP2K3 (Ser218) Polyclonal Antibody

Product Details

Ig Type:	IgG
Reactivity:	Human,Mouse,Rat
Conjugation:	Unconjugated
Molecular Weight:	Actual: 39 kDa.
Purification:	The antibody was affinity-purified from rabbit antiserum by affinity-chromatography using epitope-specific immunogen.

Applications

Verified Activity: 1. Western Blot analysis of HeLa cells using Phospho-MEK-3 (S218) Polyclonal Antibody.



Application: ELISA,IHC,WB
Recommended WB: 1:500-2000; IHC: 1:100-300; ELISA: 1:5000

Properties

Stability & Storage: Store at -20°C or -80°C for 12 months. Avoid repeated freeze-thaw cycles.
Shipping: Shipping with blue ice.

Antigen Details

Immunogen: A synthesized phosphopeptide: human MEK-3 around the phosphorylation site of S189
Antigen Species: Human
Uniprot ID: P46734
Synonyms: p-MAP2K3 (S218);p-MAP2K3 (Ser218);MAP2K3 (p-Ser218);MAP2K3 (p-S218)

Inhibitor · Natural Compounds · Compound Libraries · Recombinant Proteins

This product is for Research Use Only. Not for Human or Veterinary or Therapeutic Use

Tel:781-999-4286 E_mail:info@targetmol.com Address:34 Washington Street,Wellesley Hills,MA 02481