

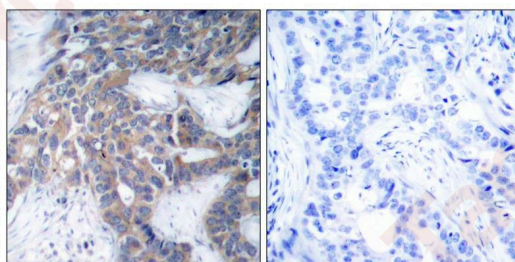
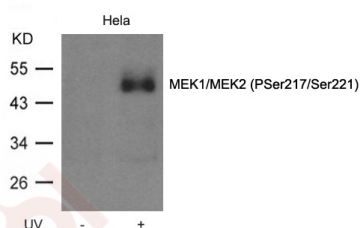
## Anti-Phospho-MAP2K1/MEK2 (Ser217/221) Polyclonal Antibody

### Product Details

Ig Type:	IgG
Reactivity:	Human,Mouse,Rat
Conjugation:	Unconjugated
Purification:	Antibodies were produced by immunizing rabbits with synthetic phosphopeptide and KLH conjugates. Antibodies were purified by affinity-chromatography using epitope-specific phosphopeptide. Non-phospho specific antibodies were removed by chromatography using non-phosphopeptide.

### Applications

- Verified Activity:
- Western blot analysis of extracts from HeLa cell untreated or treated with UV MEK1/MEK2 (Phospho-Ser217/Ser221) Antibody TMAC-02538.
  - Immunohistochemical analysis of paraffin-embedded human breast carcinoma tissue using MEK1/MEK2 (Phospho-Ser217/Ser221) Antibody TMAC-02538 (left) or the same antibody preincubated with blocking peptide (right).



Application: IHC,WB

### Properties

Stability & Storage:	Store at 2°C-8°C for 1 month. Store at -20°C or -80°C for 12 months. Avoid repeated freeze-thaw cycles.
Shipping:	Shipping with blue ice.

### Antigen Details

Immunogen: Peptide sequence around phosphorylation site of serine 217/221 (I-D-S(p)-M-A) derived from Human MEK1/MEK2

Antigen Species: Human

Uniprot ID: Q02750 & P36507

Synonyms: p-MAP2K1/MEK2 (Ser217/221);MAP2K1/MEK2 (p-S217/221);p-MAP2K1/MEK2 (S217/221); MAP2K1/MEK2 (p-Ser217/221)

---

### Research Background

Catalyzes the concomitant phosphorylation of a threonine and a tyrosine residue in a Thr-Glu-Tyr sequence located in MAP kinases. Activates ERK1 and ERK2 MAP kinases.

**Inhibitor · Natural Compounds · Compound Libraries · Recombinant Proteins**

This product is for Research Use Only · Not for Human or Veterinary or Therapeutic Use

Tel:781-999-4286 E\_mail:info@targetmol.com Address:34 Washington Street,Wellesley Hills,MA 02481