

## Anti-Phospho-MAP2K1 (Thr291) Polyclonal Antibody

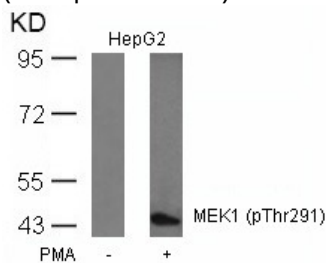
## Product Details

|               |  |
|---------------|--|
| Ig Type:      | IgG  |
| Reactivity:   | Human,Mouse,Rat  |
| Conjugation:  | Unconjugated   |
| Purification: | Antibodies were produced by immunizing rabbits with synthetic phosphopeptide and KLH conjugates. Antibodies were purified by affinity-chromatography using epitope-specific phosphopeptide. Non-phospho specific antibodies were removed by chromatography using non-phosphopeptide. |

## Applications

## Verified Activity:

1. Western blot analysis of extracts from HepG2 cells untreated or treated with PMA using MEK1 (Phospho-Thr291) Antibody TMAC-02534.



Application: WB

## Properties

|                      |   |
|----------------------|---|
| Stability & Storage: | Store at 2°C-8°C for 1 month. Store at -20°C or -80°C for 12 months. Avoid repeated freeze-thaw cycles. |
| Shipping:            | Shipping with blue ice.   |

## Antigen Details

|                  |   |
|------------------|---|
| Immunogen:       | Peptide sequence around phosphorylation site of threonine 291 (P-R-T(p)-P-G derived from Human MEK1 |
| Antigen Species: | Human   |
| Uniprot ID:      | Q02750  |
| Synonyms:        | MAP2K1 (p-T291);MAP2K1 (p-Thr291);p-MAP2K1 (Thr291);p-MAP2K1 (T291)                                 |

## Research Background

Catalyzes the concomitant phosphorylation of a threonine and a tyrosine residue in a Thr-Glu-Tyr sequence located in MAP kinases. Activates ERK1 and ERK2 MAP kinases.

**Inhibitor · Natural Compounds · Compound Libraries · Recombinant Proteins**

This product is for Research Use Only. Not for Human or Veterinary or Therapeutic Use

Tel:781-999-4286 E\_mail:info@targetmol.com Address:34 Washington Street,Wellesley Hills,MA 02481