

Anti-Phospho-MAP2K1 (Ser221) Polyclonal Antibody

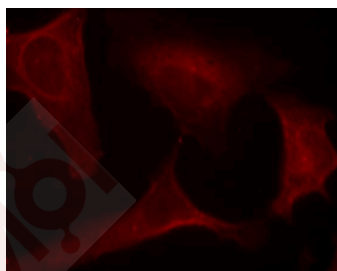
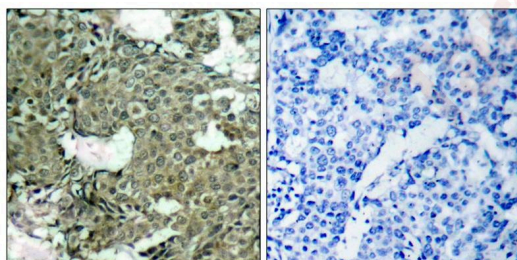
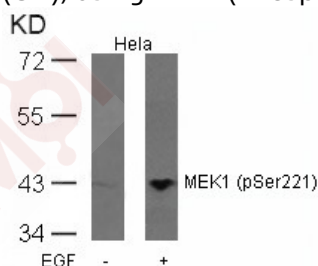
Product Details

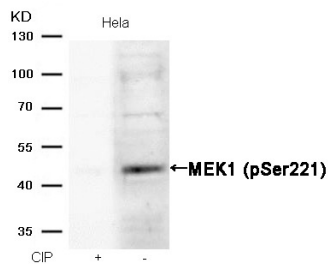
Ig Type:	IgG
Reactivity:	Human,Mouse,Rat
Conjugation:	Unconjugated
Purification:	Antibodies were produced by immunizing rabbits with synthetic phosphopeptide and KLH conjugates. Antibodies were purified by affinity-chromatography using epitope-specific phosphopeptide. Non-phospho specific antibodies were removed by chromatography using non-phosphopeptide.

Applications

Verified Activity:

- Western blot analysis of extracts from HeLa cells untreated or treated with EGF using MEK1 (Phospho-Ser221) Antibody TMAC-02533.
- Immunohistochemical analysis of paraffin-embedded human breast carcinoma tissue using MEK1 (Phospho-Ser221) Antibody TMAC-02533 (left) or the same antibody preincubated with blocking peptide (right).
- Immunofluorescence staining of methanol-fixed HeLa cells using MEK1 (Phospho-Ser221) Antibody TMAC-02533.
- Western blot analysis of extracts from HeLa cells, treated with calf intestinal phosphatase (CIP), using MEK1 (Phospho-Ser221) Antibody TMAC-02533.





Application: IF,IHC,WB

Properties

Stability & Storage: Store at 2°C-8°C for 1 month. Store at -20°C or -80°C for 12 months. Avoid repeated freeze-thaw cycles.

Shipping: Shipping with blue ice.

Antigen Details

Immunogen: Peptide sequence around phosphorylation site of serine 221 (A-N-S(p)-F-V) derived from Human MEK1

Antigen Species: Human

Uniprot ID: Q02750

Synonyms: p-MAP2K1 (S221);p-MAP2K1 (Ser221);MAP2K1 (p-S221);MAP2K1 (p-Ser221)

Research Background

Catalyzes the concomitant phosphorylation of a threonine and a tyrosine residue in a Thr-Glu-Tyr sequence located in MAP kinases. Activates ERK1 and ERK2 MAP kinases.

Inhibitor · Natural Compounds · Compound Libraries · Recombinant Proteins

This product is for Research Use Only · Not for Human or Veterinary or Therapeutic Use

Tel:781-999-4286 E_mail:info@targetmol.com Address:34 Washington Street,Wellesley Hills,MA 02481