

Anti-MAP2K1 Antibody (3D339)

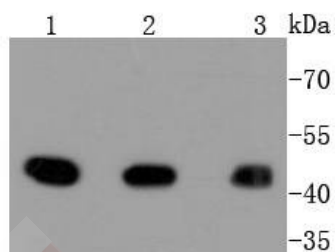
Product Details

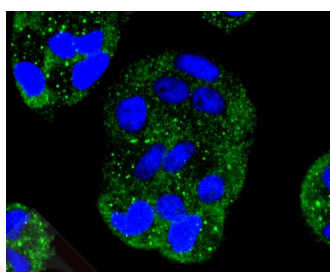
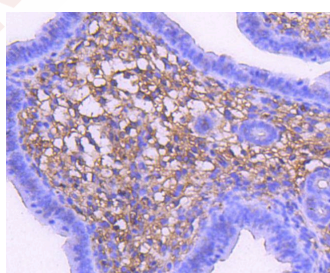
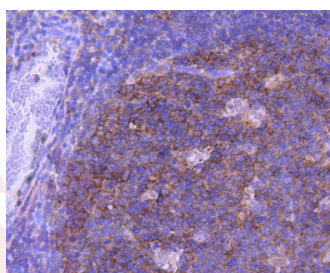
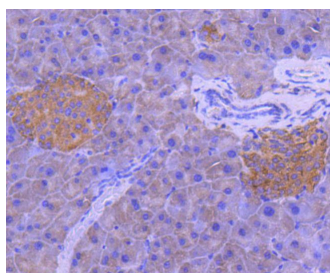
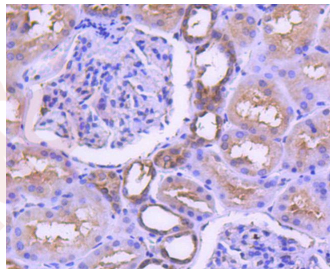
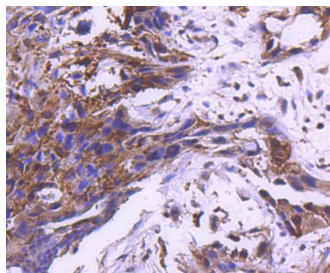
Ig Type:	IgG
Reactivity:	Human,Mouse,Rat,Cow,Dog
Conjugation:	Unconjugated
Molecular Weight:	Theoretical: 43 kDa.
Clone:	3D339
Purification:	ProA affinity purified

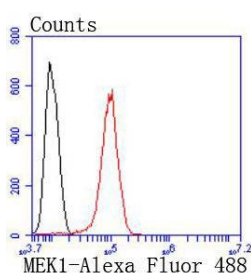
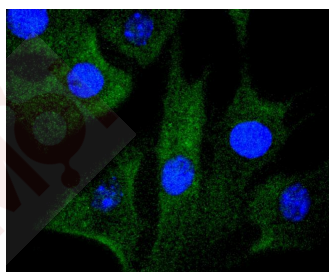
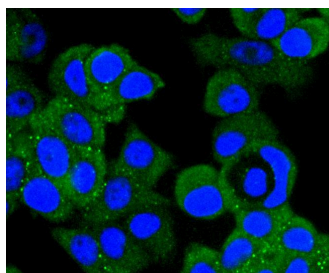
Applications

1. Western blot analysis of MEK1 on different lysates using anti-MEK1 antibody at 1/1,000 dilution. Positive control: Lane 1: A431, Lane 2: HepG2, Lane 3: Hela.
2. Immunohistochemical analysis of paraffin-embedded human breast carcinoma tissue using anti-MEK1 antibody. Counter stained with hematoxylin.
3. Immunohistochemical analysis of paraffin-embedded human kidney tissue using anti-MEK1 antibody. Counter stained with hematoxylin.
4. Immunohistochemical analysis of paraffin-embedded mouse pancreas tissue using anti-MEK1 antibody. Counter stained with hematoxylin.
5. Immunohistochemical analysis of paraffin-embedded human tonsil tissue using anti-MEK1 antibody. Counter stained with hematoxylin.
6. Immunohistochemical analysis of paraffin-embedded mouse uterus tissue using anti-MEK1 antibody. Counter stained with hematoxylin.
7. ICC staining MEK1 in Hela cells (green). The nuclear counter stain is DAPI (blue). Cells were fixed in paraformaldehyde, permeabilised with 0.25% Triton X100/PBS.
8. ICC staining MEK1 in MCF-7 cells (green). The nuclear counter stain is DAPI (blue). Cells were fixed in paraformaldehyde, permeabilised with 0.25% Triton X100/PBS.
9. ICC staining MEK1 in NIH/3T3 cells (green). The nuclear counter stain is DAPI (blue). Cells were fixed in paraformaldehyde, permeabilised with 0.25% Triton X100/PBS.
10. Flow cytometric analysis of Hela cells with MEK1 antibody at 1/50 dilution (red) compared with an unlabelled control (cells without incubation with primary antibody; black). Alexa Fluor 488-conjugated goat anti rabbit IgG was used as the secondary antibody.

Verified Activity:







Application: FCM,ICC/IF,IHC,IP,WB

Recommended WB: 1:1000-2000; IHC: 1:50-200; ICC/IF: 1:50-200; FCM: 1:50-100

Properties

Stability & Storage: Store at -20°C or -80°C for 12 months. Avoid repeated freeze-thaw cycles.

Shipping: Shipping with blue ice.

Antigen Details

Immunogen: Recombinant Protein

Uniprot ID: Q02750

Synonyms: EC 2.7.12.2;MAPKK 1;Dual specificity mitogen-activated protein kinase kinase 1;MKK1;ERK activator kinase 1;PRKMK1;MAP kinase kinase 1;MAPK/ERK kinase 1;MEK 1

Research Background

A family of protein kinases located upstream of the MAP kinases and responsible for their activation has been identified. The prototype member of this family, designated MAP kinase kinase, or MEK-1, specifically phosphorylates the MAP kinase regulatory threonine and tyrosine residues present in the Thr-Glu-Tyr motif of ERK. A second MEK family member, MEK-2, resembles MEK-1 in its substrate specificity. MEK-3 (or MKK-3) functions to activate p38 MAP kinase, and MEK-4 (also called SEK1 or MKK-4) activates both p38 and JNK MAP kinases. MEK-5 appears to specifically phosphorylate ERK5, whereas MEK-6 phosphorylates p38 and p38b. MEK-7 (or MKK-7) phosphorylates and activates the JNK signal transduction pathway.

Inhibitor · Natural Compounds · Compound Libraries · Recombinant Proteins

This product is for Research Use Only · Not for Human or Veterinary or Therapeutic Use

Tel:781-999-4286 E_mail:info@targetmol.com Address:34 Washington Street,Wellesley Hills,MA 02481