

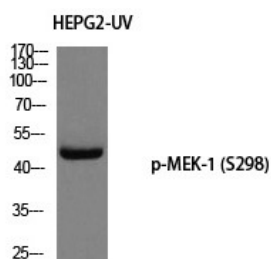
## Anti-Phospho-MAP2K1 (Ser298) Polyclonal Antibody

## Product Details

Ig Type:	IgG
Reactivity:	Human,Mouse,Rat
Conjugation:	Unconjugated
Molecular Weight:	Actual: 45 kDa.
Purification:	The antibody was affinity-purified from rabbit antiserum by affinity-chromatography using epitope-specific immunogen.

## Applications

Verified Activity: 1. Western blot analysis of HEPG2-UV using p-MEK-1 (S298) antibody.



Application: ELISA,IHC,WB  
Recommended WB: 1:500-2000; IHC: 1:100-300; ELISA: 1:10000

## Properties

Stability & Storage: Store at -20°C or -80°C for 12 months. Avoid repeated freeze-thaw cycles.  
Shipping: Shipping with blue ice.

## Antigen Details

Immunogen: A synthesized phosphopeptide: human MEK-1 around the phosphorylation site of S298  
Antigen Species: human  
Uniprot ID: Q02750  
Synonyms: p-MAP2K1 (S298);MAP2K1 (p-Ser298);p-MAP2K1 (Ser298);MAP2K1 (p-S298)

**Inhibitor · Natural Compounds · Compound Libraries · Recombinant Proteins**

This product is for Research Use Only. Not for Human or Veterinary or Therapeutic Use

Tel:781-999-4286 E\_mail:info@targetmol.com Address:34 Washington Street,Wellesley Hills,MA 02481