

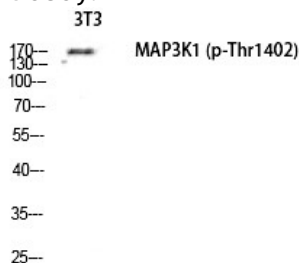
Anti-Phospho-MEK Kinase-1 (Thr1402) Polyclonal Antibody

Product Details

Ig Type:	IgG
Reactivity:	Human,Mouse,Rat
Conjugation:	Unconjugated
Molecular Weight:	Actual: 130 kDa.
Purification:	The antibody was affinity-purified from rabbit antiserum by affinity-chromatography using epitope-specific immunogen.

Applications

Verified Activity: 1. Western Blot analysis of NIH-3T3 cells using Phospho-MEK Kinase-1 (T1402) Polyclonal Antibody.



Application:	ELISA,IHC,WB
Recommended	WB: 1:500-2000; IHC: 1:100-300; ELISA: 1:40000

Properties

Stability & Storage:	Store at -20°C or -80°C for 12 months. Avoid repeated freeze-thaw cycles.
Shipping:	Shipping with blue ice.

Antigen Details

Immunogen:	A synthesized phosphopeptide: human MEK Kinase-1 around the phosphorylation site of T1402
Antigen Species:	human
Uniprot ID:	Q13233
Synonyms:	p-MEK Kinase-1 (T1402);p-MEK Kinase-1 (Thr1402);MEK Kinase-1 (p-T1402);MEK Kinase-1 (p-Thr1402)

Inhibitor · Natural Compounds · Compound Libraries · Recombinant Proteins

This product is for Research Use Only. Not for Human or Veterinary or Therapeutic Use

Tel:781-999-4286 E_mail:info@targetmol.com Address:34 Washington Street,Wellesley Hills,MA 02481