

Anti-MDM2 Antibody (6Z692)

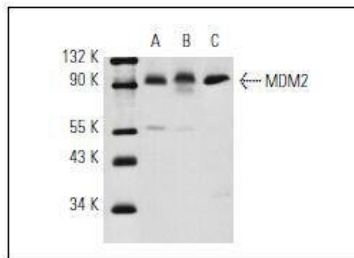
Product Details

Reactivity:	Human,Mouse,Rat
Conjugation:	Unconjugated
Molecular Weight:	Theoretical: 90 kDa.
Clone:	6Z692
Purification:	ProA affinity purified

Applications

Verified Activity:

1. Western blot analysis of MDM2 expression in U-2OS (A), A-673 (B) and RAW 264.7 (C) whole cell lysates.



Application: IF,IHC-P,IP,WB

Recommended WB: 1:100-1000; IHC-P: 1:50-500; IP: 1-2 µg per 100-500 µg of total protein(1 ml of cell lysate)

Properties

Stability & Storage: Store at -20°C or -80°C for 12 months. Avoid repeated freeze-thaw cycles.

Shipping: Shipping with blue ice.

Antigen Details

Immunogen: Amino acids 154-167 of MDM2 of human origin

Antigen Species: Human

Uniprot ID: Q00987

Synonyms: Mdm2;E3 ubiquitin-protein ligase Mdm2;Double minute 2 protein;RING-type E3 ubiquitin transferase Mdm2;p53-binding protein Mdm2;Oncoprotein Mdm2

Research Background

p53 is the most commonly mutated gene in human cancer identified to date. Expression of p53 leads to inhibition of cell growth by preventing progression of cells from G1 to S phase of the cell cycle. Most importantly, p53 functions to cause arrest of cells in the G1 phase of the cell cycle following any exposure of cells to DNA-damaging agents. The MDM2 (murine double minute-2) protein was initially identified as an oncogene in a murine transformation system. MDM2 functions to bind p53 and block p53-mediated transactivation of cotransfected reporter constructs. The MDM2 gene is amplified in a high percentage of human sarcomas that retain wildtype p53 and tumor cells that overexpress MDM2 can tolerate high levels of p53 expression. These findings argue that MDM2 overexpression represents at least one mechanism by which p53 function can be abrogated during tumorigenesis.

Inhibitor · Natural Compounds · Compound Libraries · Recombinant Proteins

This product is for Research Use Only · Not for Human or Veterinary or Therapeutic Use

Tel:781-999-4286 E_mail:info@targetmol.com Address:34 Washington Street,Wellesley Hills,MA 02481