

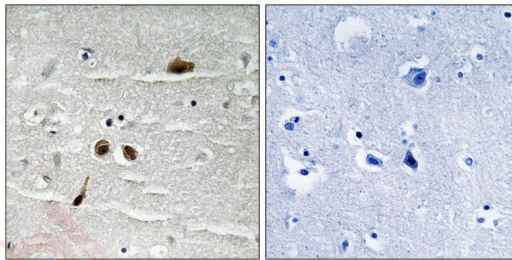
Anti-Phospho-MDC1 (Ser513) Polyclonal Antibody

Product Details

Ig Type:	IgG
Reactivity:	Human
Conjugation:	Unconjugated
Molecular Weight:	Actual: 226 kDa.
Purification:	Antibodies were produced by immunizing rabbits with synthetic phosphopeptide and KLH conjugates. Antibodies were purified by affinity-chromatography using epitope-specific phosphopeptide. Non-phospho specific antibodies were removed by chromatography using non-phosphopeptide.

Applications

Verified Activity: 1. Immunohistochemical analysis of paraffin-embedded human brain tissue using MDC1 (Phospho-Ser513) antibody TMAC-02506 (left) or the same antibody preincubated with blocking peptide (right).



Application:	IHC
Recommended	IHC: 1:50-100

Properties

Stability & Storage:	Store at -20°C or -80°C for 12 months. Avoid repeated freeze-thaw cycles.
Shipping:	Shipping with blue ice.

Antigen Details

Immunogen:	Peptide sequence around phosphorylation site of Serine 513(E-R-S(p)-Q-A) derived from Human MDC1
Antigen Species:	Human
Uniprot ID:	Q14676
Synonyms:	p-MDC1 (Ser513);p-MDC1 (S513);MDC1 (p-Ser513);MDC1 (p-S513)

Research Background

The MDC1 protein contains a forkhead homology-associated (FHA) domain and 2 BRCA1 (MIM 113705) C-terminal motifs (BRCTs) and is required for the intra-S-phase DNA damage checkpoint.

Inhibitor · Natural Compounds · Compound Libraries · Recombinant Proteins

This product is for Research Use Only · Not for Human or Veterinary or Therapeutic Use

Tel:781-999-4286 E_mail:info@targetmol.com Address:34 Washington Street,Wellesley Hills,MA 02481