

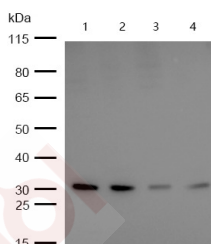
Anti-Phospho-MCU (S92) Polyclonal Antibody

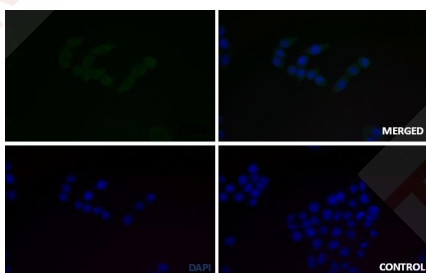
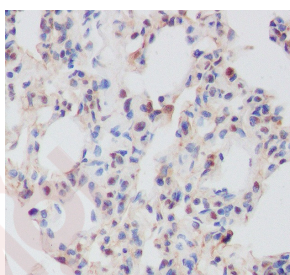
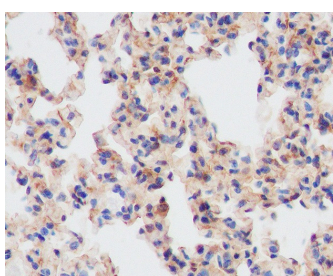
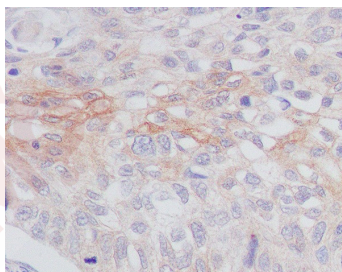
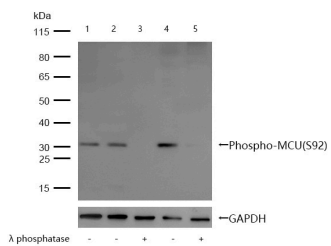
Product Details

Ig Type:	IgG
Reactivity:	Human,Mouse,Rat
Conjugation:	Unconjugated
Molecular Weight:	Actual: 32 kDa.
Purification:	Affinity-chromatography

Applications

1. All lanes: Phospho-MCU (S92) Rabbit mAb at 1/1k dilution, Lane 1: MCF7 whole cell lysates, Lane 2 : 293T whole cell lysates, Lane 3: A549 whole cell lysates, Lane 4 : Rat Liver lysates, Lysates/proteins at 20 µg per lane. Secondary All lanes: Goat Anti-Rabbit IgG H&L (HRP) at 1/20000 dilution, Predicted band size: 40 kDa, Observed band size: 32 kDa, Exposure time: 8 seconds.
2. All lanes: Phospho-MCU (S92) Rabbit mAb at 1/1k dilution, Lane 1: 3T3 whole cell lysates, Lane 2: 293T whole cell lysates, Lane 3: 293T treated with Lambda Protein Phosphatase for 30min whole cell lysates, Lane 4: MCF7 whole cell lysates, Lane 5: MCF7 treated with Lambda Protein Phosphatase for 30min whole cell lysates, Lysates/proteins at 20 µg per lane. Secondary All lanes: Goat Anti-Rabbit IgG H&L (HRP) at 1/20000 dilution, Predicted band size: 40 kDa, Observed band size: 32 kDa, Exposure time: 10 seconds.
3. Formalin-fixed, paraffin-embedded human lung carcinom tissue stained for Phospho-MCU (S92) using 14297 at 1/100 dilution in immunohistochemical analysis.
4. Formalin-fixed, paraffin-embedded mouse lung tissue stained for Phospho-MCU (S92) using 14297 at 1/100 dilution in immunohistochemical analysis.
5. Formalin-fixed, paraffin-embedded rat lung tissue stained for Phospho-MCU (S92) using 14297 at 1/100 dilution in immunohistochemical analysis.
6. Immunocytochemistry/Immunofluorescence-Phospho-MCU (S92) antibody, Phospho-MCU (S92) Rabbit mAb staining Phospho-MCU (S92) in the HeLa cell line by ICC/IF. Cells were fixed with 4% Paraformaldehyde permeabilized with 0.1% Triton X-100. Samples were incubated with Phospho-MCU (S92) Rabbit mAb at a working dilution of 1/100. The secondary antibody was Alexa Fluor® 488 goat anti rabbit, used at a dilution of 1/500. The negative control is shown in bottom right hand panel-for the negative control, purified Phospho-MCU (S92) Rabbit mAb was used at a dilution of 1/100 followed by Alexa Fluor® 647 goat anti- rabbit antibody at a dilution of 1/500. Nuclei were counterstained with DAPI.





Application: IF,IHC,WB

Recommended WB: 1:500-2000; IHC: 1:50-200; IF: 1:50-200

Properties

Stability & Storage: Store at 2°C-8°C for 1 month. Store at -20°C or -80°C for 12 months. Avoid repeated freeze-thaw cycles.

Shipping: Shipping with blue ice.

Antigen Details

Immunogen: A synthesized phosphopeptide: human MCU Receptor around the phosphorylation site of S92
Antigen Species: human
Uniprot ID: Q8NE86
Synonyms: p-MCU (S92);MCU (p-S92)

Research Background

Mitochondrial inner membrane calcium uniporter that mediates calcium uptake into mitochondria (PubMed: 21685888, PubMed:21685886, PubMed:23101630, PubMed:22904319, PubMed:23178883, PubMed:22829870, PubMed:22822213, PubMed:24332854, PubMed:23755363, PubMed:26341627).

Inhibitor · Natural Compounds · Compound Libraries · Recombinant Proteins

This product is for Research Use Only· Not for Human or Veterinary or Therapeutic Use

Tel:781-999-4286 E_mail:info@targetmol.com Address:34 Washington Street,Wellesley Hills,MA 02481