

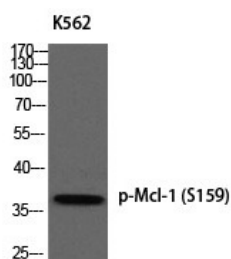
Anti-Phospho-Mcl-1 (Ser159) Polyclonal Antibody

Product Details

Ig Type:	IgG
Reactivity:	Human,Mouse
Conjugation:	Unconjugated
Molecular Weight:	Actual: 39 kDa.
Purification:	The antibody was affinity-purified from rabbit antiserum by affinity-chromatography using epitope-specific immunogen.

Applications

Verified Activity: 1. Western blot analysis of K562 using p-Mcl-1 (S159) antibody.



Application: ELISA,IF,WB
Recommended WB: 1:500-2000; IF: 1:200-1000; ELISA: 1:10000

Properties

Stability & Storage: Store at -20°C or -80°C for 12 months. Avoid repeated freeze-thaw cycles.
Shipping: Shipping with blue ice.

Antigen Details

Immunogen: A synthesized phosphopeptide: human Mcl-1 around the phosphorylation site of S159
Antigen Species: Human
Uniprot ID: Q07820
Synonyms: p-Mcl-1 (S159);Mcl-1 (p-S159);p-Mcl-1 (Ser159);Mcl-1 (p-Ser159)

Inhibitor · Natural Compounds · Compound Libraries · Recombinant Proteins

This product is for Research Use Only. Not for Human or Veterinary or Therapeutic Use

Tel:781-999-4286 E_mail:info@targetmol.com Address:34 Washington Street,Wellesley Hills,MA 02481