

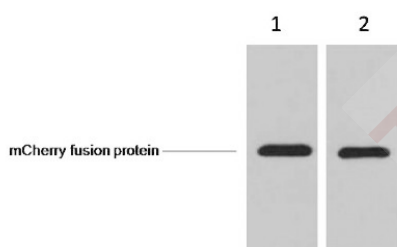
Anti-mCherry Tag Antibody (40620)

Product Details

Conjugation: Unconjugated
Clone: 40620
Purification: Affinity-chromatography

Applications

Verified Activity: 1. 1ug mCherry fusion protein+ Primary antibody dilution at 1、 1:5,000 2、 1:10,000.



Application: IF,IHC,IP,WB
Recommended WB: 1:3000-10000

Properties

Stability & Storage: Store at -20°C or -80°C for 12 months. Avoid repeated freeze-thaw cycles.
Shipping: Shipping with blue ice.

Antigen Details

Immunogen: Full length mCherry protein

Inhibitor · Natural Compounds · Compound Libraries · Recombinant Proteins

This product is for Research Use Only. Not for Human or Veterinary or Therapeutic Use

Tel:781-999-4286 E_mail:info@targetmol.com Address:34 Washington Street,Wellesley Hills,MA 02481